



## Instructions Specifically Developed for Dealer Installations

DOC#07-08-04

**Description:** Rabbit Enhanced Ground Effects Kit

**Part Number:**

1KM-071-685-U-9AX	Side Skirts
1K0-071-609-9AX	Front Valance
1K0-071-610-UB-9AX	Rear Valance & Diffuser
1K0-071-640-K-9AX	Roof Spoiler
1K0-071-910-OU	Exhaust Tips

**Fitment** Rabbit 2006.5+

**Quantity:** 1 each

**Supplier:** Votex GmbH

**Publish Date:** May 1, 2007



### NOTE:

Before starting make sure painted and trim surfaces are protected to avoid scratching during installation process of the items. Use proper surface protection covers and work attire free of dirt and grease.



### WARNING:

Read entire instructions thoroughly before starting  
Improper installation procedures can cause serious personal injury.

- Installation should be performed only by a qualified technician.
- Read all instructions thoroughly before starting.
- Observe all safety precautions when working under a vehicle.
- Beware of sharp edges.
- Always wear safety glasses to help protect eyes.
- Always wear protective gear as gloves and use caution when using hand tools. Read entire instructions thoroughly before starting.

**Note:**

Attention: Please place this sheet into the glove box of any Volkswagen that is equipped with a body kit. Also, make the customer aware of this sheet.

## REDUCED GROUND CLEARANCE FOR VEHICLES EQUIPPED WITH AERODYNAMIC BODY PACKAGES

Congratulations on the purchase of your new Volkswagen. Because this vehicle is equipped with a body kit, there are some situations we'd like to make you aware of. The following information will assist you in keeping your Volkswagen looking good. The aerodynamic package added to the vehicle restricts the chassis clearance of the vehicle. Contact with the floor, sills or ramps may cause the front, rear and door sill covers to become damaged.

In certain circumstances, the front, rear and/or door sill covers may collide with obstacles and become damaged. It is recommended that you exercise extra caution when exiting or entering parking lots, parking, loading or unloading and driving.

Drive slowly and prepare to brake in the following situations:

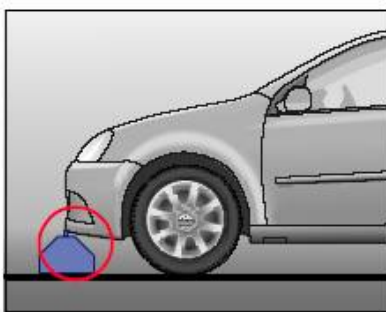


Fig. 1 Parking where there are curbs.

When parking in areas as shown in Fig. 1, which contain or are located close to curbs or posts. Curbs or posts may be of different heights and can damage your vehicle if hit.

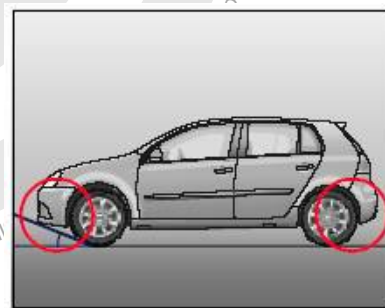


Fig. 2 Ascending ramps (Driveways)

When ascending (Fig. 1) or descending (Fig. 3) ramps in parking lots or driveways. This can cause damage to the front, rear, and/or door sill covers. Approach slowly and ensure there is sufficient chassis clearance.

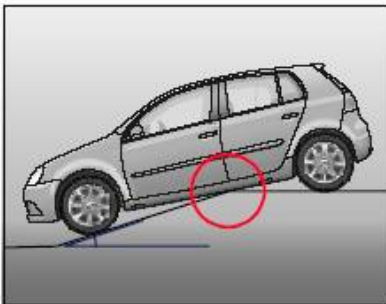


Fig. 3 Descending ramps (Driveways)

When driving over speed bumps in traffic slowing areas or when driving thru potholes or ruts on poorly maintained roads. Driving too quickly in some conditions can cause suspension travel (bouncing) which could cause damage. Always drive with extra caution and be prepared to brake if you do not have a clear view of the road ahead.

**Note:****Automatic Car Washes.**

Before going through an automatic car wash, you should take the usual precautions (closing the windows). If your vehicle has special accessories - e.g. spoilers, radio antenna - it is best to speak to the operator of the car wash.

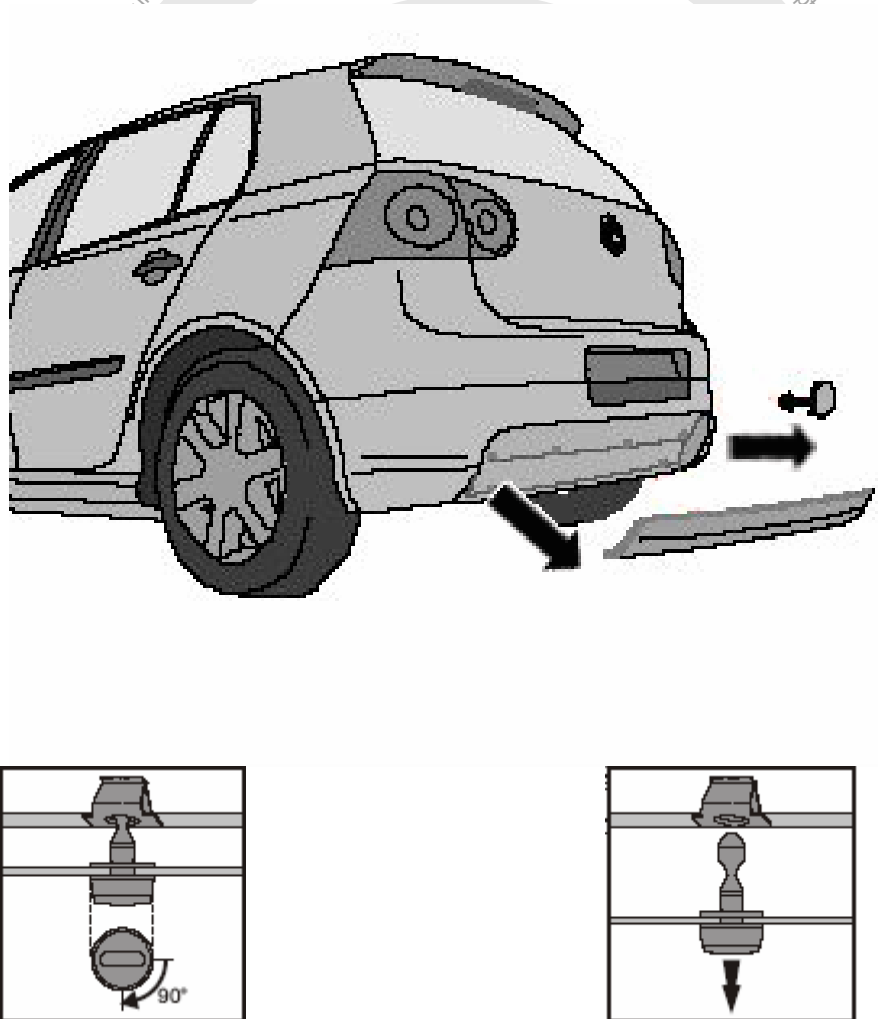
**Note:**

It is preferable to wash your vehicle in a brushless carwash. Never drive your vehicle through any automatic car wash that fails to provide either sufficient clearance for your vehicle or sufficient track width for your tires. Risk of expensive damage to the vehicle's underbody, tires, and rims!

As described in your Maintenance & Warranty booklet, damage or malfunction due to misuse of the vehicle or failure to operate the vehicle in accordance with the instructions of the Owner's Manual will not be covered under warranty.

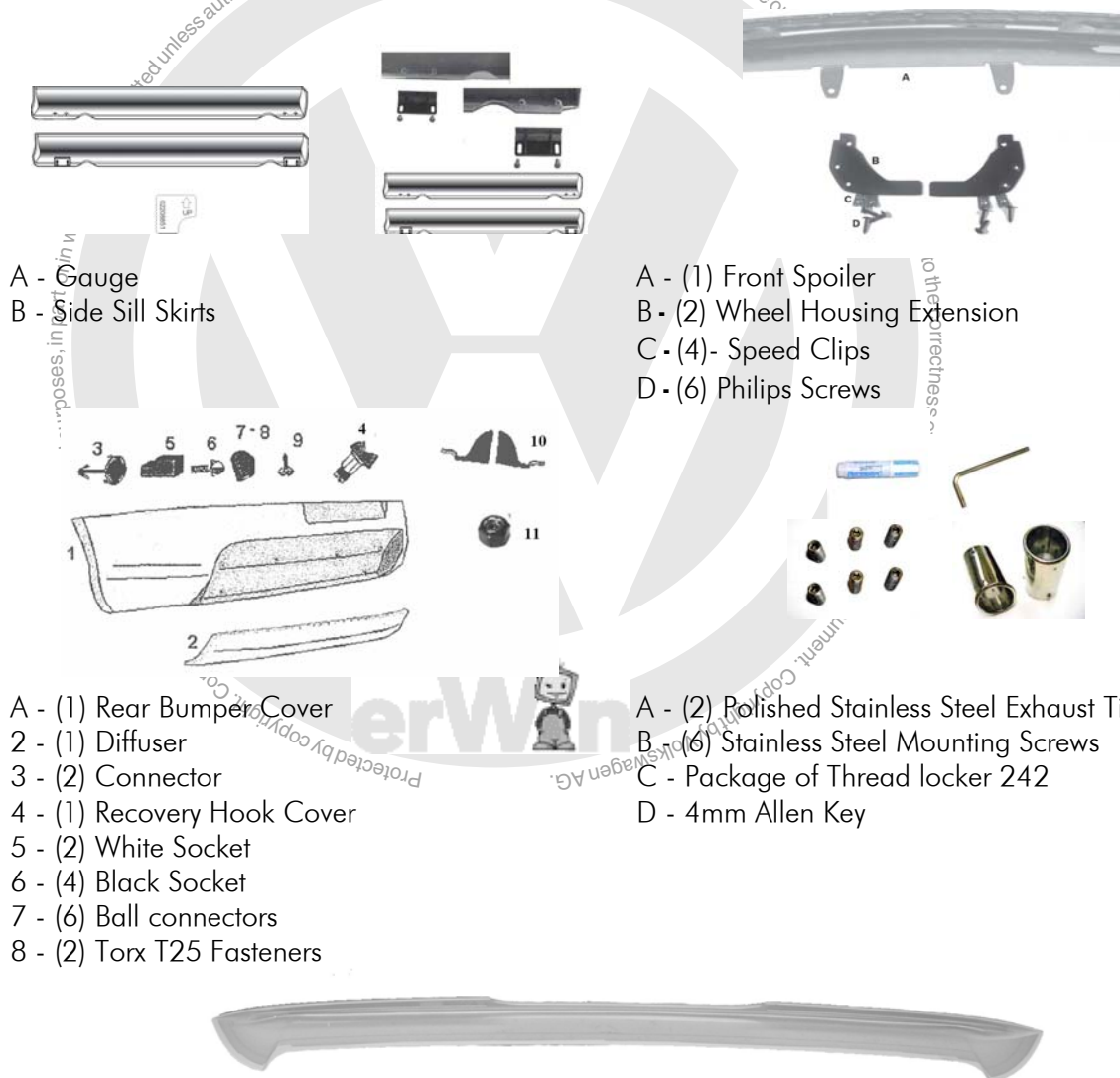
# Tow Hook Access Hole Covered- Rabbit/GTi MKV

In some instances the rear lower skirt partially covers the tow hook access hole. The access hole can be readily accessed by removing the lower skirt. Simply twist the retainers holding the skirt in place 90 degrees. See sample pictures below. The tow hook access cover can then be removed.



**Note: Copy this page and place in vehicle. Advise customer of this procedure.**

## Parts Contained in the Rabbit Side Sill Skirt Installation Kit



A - Gauge  
B - Side Sill Skirts

A - (1) Front Spoiler  
B - (2) Wheel Housing Extension  
C - (4)- Speed Clips  
D - (6) Philips Screws

A - (1) Rear Bumper Cover  
2 - (1) Diffuser  
3 - (2) Connector  
4 - (1) Recovery Hook Cover  
5 - (2) White Socket  
6 - (4) Black Socket  
7 - (6) Ball connectors  
8 - (2) Torx T25 Fasteners

A - (2) Polished Stainless Steel Exhaust Tips  
B - (6) Stainless Steel Mounting Screws  
C - Package of Thread locker 242  
D - 4mm Allen Key



Roof Spoiler



### Note:

If you find parts that are out of shape, have paint imperfections or not acceptable, put them aside in a clean organized manner so they can be returned to suppliers. Report these parts weekly to [vwdropship@vw.com](mailto:vwdropship@vw.com). Request any missing hardware to [vwaccessories@vw.com](mailto:vwaccessories@vw.com). Extra parts will be shipped to you.

## Tools Required for Installation



#2 Phillips Screwdriver



Essex™ 43532 Betaseal



Electric Drill



2" low adhesive tape



10mm wrench



Essex™ 43532 Betaseal adhesive primer



3 inch extension



Torque Wrench



Adhesive Gun (Powered)



4mm, 5mm drill bit



T25, T30 Torx



Soapy Water



Adhesive Spreader



1/4" Drive Ratchet



80 Grit Sandpaper



Angled pick tool



Wiping Cloth, Soap Solution



Cleaning Solvent (Cleaner Degreaser)



## WARNING:

- Always wear protective gear and use caution when using hand tools throughout the installation process.



### NOTE:

Do not bend any tabs on the parts before installing, as this will damage the paint of the part. Over extending the tabs will result in breakage.



### NOTE:

Use care in handling any of the parts, making sure not to damage them.

## Installation - Side Skirts



### Step # 01

#### Installation - Side Skirts

Using two people, "dry" fit the side skirt to the vehicle. Press the skirt to the side of the vehicle, while checking the skirts' alignment.



### NOTE:

The top of the side skirt will align with the top of the stone guard material.



### Step # 02

#### Installation - Side Skirts

Apply cleaning solvent with a soft wiping cloth to the lower side of the vehicle, from the stone guard to the lower edge of the door.



### Step # 03

#### Installation - Side Skirts

Loosen the top **Torx T25** screw one turn and remove the bottom **Torx T25** screw from the back of the front wheel housing.





#### Step # 04

##### Installation - Side Skirts

Pre-stage **10 to 12** pieces of low adhesive tape.



#### **NOTE:**

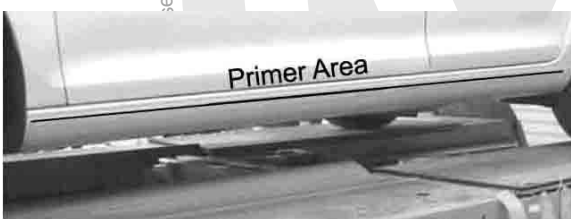
Fold over one end of the tape to provide a pull tab for the removal of the tape.



#### Step # 05

##### Installation - Side Skirts

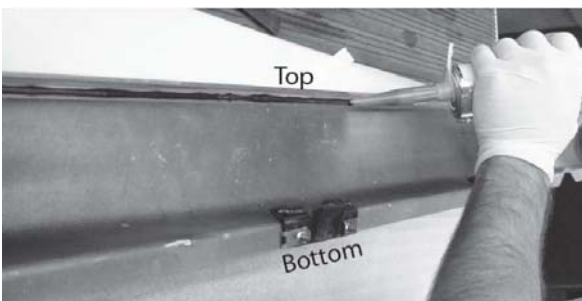
Using 80 grit sandpaper, clean the adhesive channel, and clean with solvent to remove any residue.



#### Step # 06

##### Installation - Side Skirts

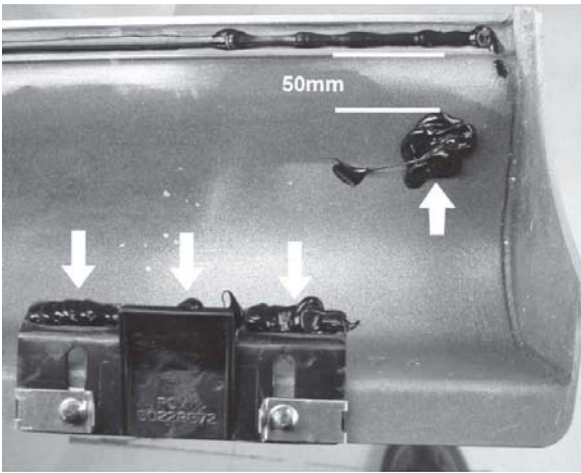
Apply primer to the area indicated in the pictures on both the side skirt and the side of the car. The primer on the side of the car should be placed no higher than the top of the rock guard. The primer on the side skirts should be placed both in the adhesive channel on the top and the top of the tabs on the bottom of the skirts.



#### Step # 07

##### Installation - Side Skirts

Apply a small bead of adhesive to the bottom of the channel at the top side of the side skirt.



## Step # 08

### Installation - Side Skirts

Apply a bead, approximately **8mm** in diameter, of adhesive to the mounting surfaces of the spacers and to the front and rear of the inside of the side skirt approximately **50mm** below the adhesive channel.



## Step # 09

### Installation - Side Skirts

Use the gauge with the arrow pointing upward to check alignment of the side skirt to the door sill. The gauge fits to the upper radius of the rocker with the skirt touching the bottom of the gauge



#### **NOTE:**

The Side Skirt will cover the stone guard coating on the rocker panel.



Helper Required



## Step # 10

### Installation - Side Skirts

Using two people attach the side skirt to rear wheel housing. Working from the rear of the vehicle to the front, place pressure on the top of the side skirt to adhere it to the vehicle, while placing low adhesive tape every **100mm to 150mm**.



#### **NOTE:**

Tape should stay in place for 1.5 Hour to ensure cure process. This is based on a 20° Celsius or 68° Fahrenheit ambient temperature and 50% humidity.





### Step # 11

#### Installation - Side Skirts

Re-install the **Torx T25** screw removed from the front wheel house in the side skirt.

Tighten the top **Torx T25** screw and check skirt alignment and clean any excess adhesive from the skirts.



**Quality Check**

### Installation – Front Valance



### Step # 12

#### Installation – Front Valance

Raise vehicle to working position. Turn the wheel to allow access to the **Torx T25** screw at the bottom of the front of the wheel house.

Remove the **two Torx T25** fasteners from the wheel housing on the driver and passenger side.



### Step # 13

#### Installation – Front Valance

Remove **8 Torx 25** screws from the bottom of the factory valance.



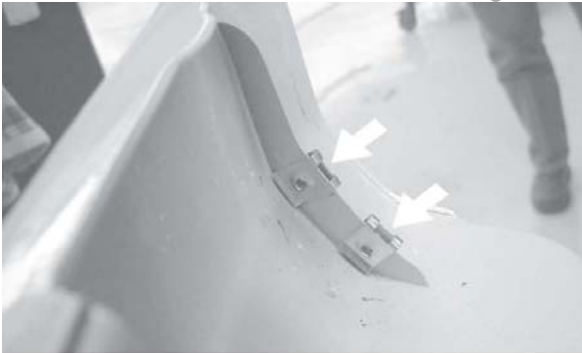
#### **Step # 14** **Installation – Front Valance**

Starting at the left and right corners, pull the valance out of its mountings. With a down and forward motion remove the front of the valance from the fascia assembly.



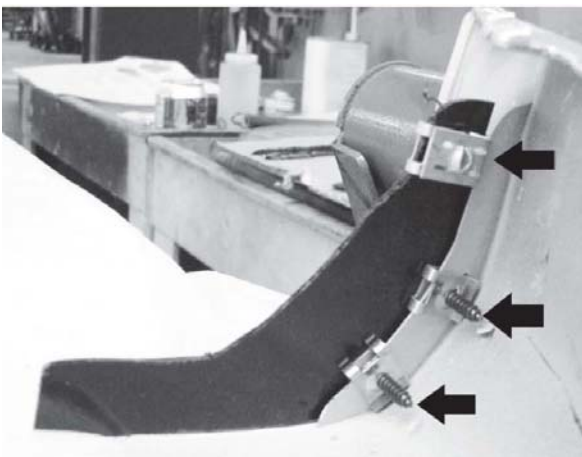
#### **Step # 15** **Installation – Front Valance**

Remove the speed clips from the original valance on both sides.



#### **Step # 16** **Installation – Front Valance**

Install **2 of the speed clips** from the hardware kit at the two holes of the new front valance on both sides.



#### **Step # 17** **Installation – Front Valance**

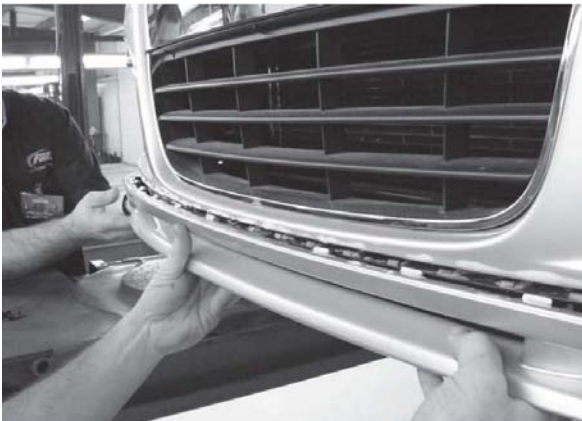
Reinstall the factory speed clip at the top hole of the wheel housing extension. Install the wheel house extension on the left and right sides of the new front valance with Phillips screws from the kit.



### Step # 18

#### Installation – Front Valance

Lubricate the mounting channel of the front cover and mounting tabs of the new front valance with a soap and water solution.



### Step # 19

#### Installation – Front Valance

Using two people start at the center of the new front valance and engage the locking tabs of the front valance in the mounting channel working to the left and right sides of the vehicle. Clean any soap solution from the front valance.



#### **NOTE:**

A click or pop sound will be heard when the tab engages into the front fascia.



### Step # 20

#### Installation – Front Valance

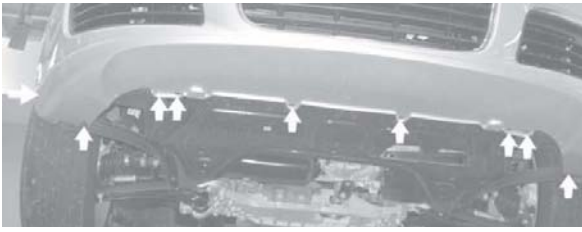
Position the speed clip to align with the original position of the **Torx T25** screw in the pre-drilled hole in the wheel house and install the screw. An upward pressure on the bottom of the valance may be required to align the wheel house extension and mounting hole in the wheel house. Repeat on other side.



### Step # 21

#### Installation – Front Valance

Place the **Torx T25** screw on the Torx bit. Place the screw in the mounting hole and use the screw and tool to align the mounting to its fastening point. Tighten the screw.



### Step # 22

#### Installation – Front Valance

Starting at the center of the vehicle reinstall the **8 Torx T25** screws using the procedure described in Step#13. Do not over stress mounting tabs



### Step # 23

#### Installation – Front Valance

Locate the **2 pre-drilled holes** in the front valance between the corner and first **Torx T25** screw. Drill a **5mm** hole in the bracket above the hole. The drill bit should just penetrate the splash shield.



#### **NOTE:**

Over drilling will damage hidden vehicle components.



### Step # 24

#### Installation – Front Valance

Install the Phillips head screw to attach the valance to the splash shield.



### Step # 25

#### Installation – Front Valance

Check alignment of the Front valance and clean any soap residue with a wiping cloth and torque all **Torx 25** fasteners to **2Nm**.



#### **NOTE**

The gap should be consistent from left to right.



**Quality check**



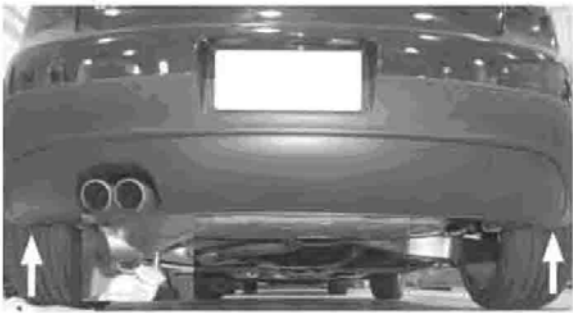
## Installation – Rear Valance / Diffuser



### Step # 26

#### Installation – Rear Valance / Diffuser

Remove the two **Torx T25** fasteners from the wheel house on the driver and passenger side.



### Step # 27

#### Installation – Rear Valance / Diffuser

Remove the **two Torx T25** fasteners from the bottom of the wheel house. Remove the **four Torx T30** from the bottom of the rear valance



### Step # 28

#### Installation – Rear Valance / Diffuser

Starting at the wheel house remove the diffuser by pulling out and down



### Step # 29

#### Installation – Rear Valance / Diffuser

Remove the three clips from the driver and passenger side of the valance



### **Step # 30**

#### **Installation – Rear Valance / Diffuser**

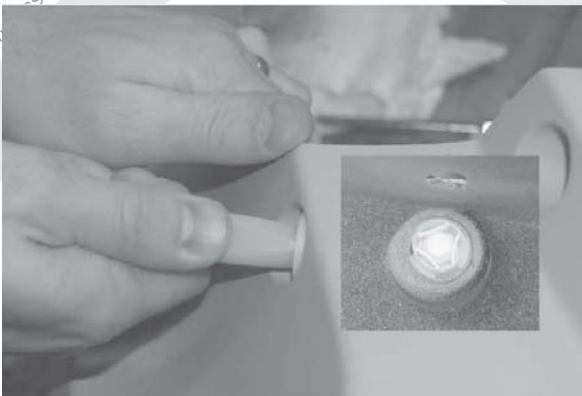
Install the clips removed from the original diffuser on the driver and passenger side of the new valance.



### **Step # 31**

#### **Installation – Rear Valance / Diffuser**

Install the connector using an original **Torx T25** fastener in the top hole and a **Torx T25** fastener from the kit.



### **Step # 32**

#### **Installation – Rear Valance / Diffuser**

Install the two white sockets in the upper outside holes in the valance. Install the four black sockets in the remaining four holes.

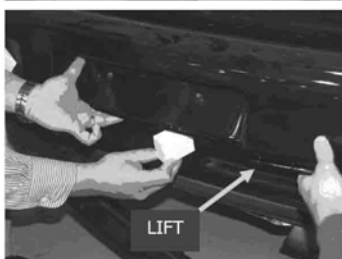
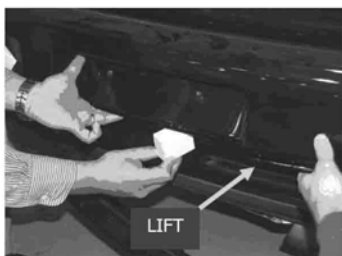
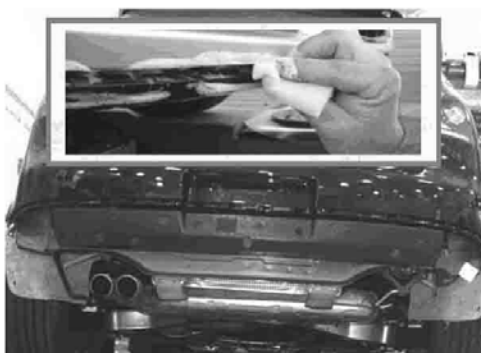


### **Step # 33**

#### **Installation – Rear Valance / Diffuser**

Install the recovery hook access hole cover by inserting the tab in the slot in the valance





### Step # 34

#### Installation – Rear Valance / Diffuser

Lubricate the mounting channel slots with the soapy water solution.

### Step # 35

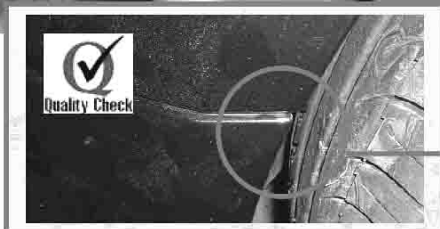
#### Installation – Rear Valance / Diffuser

Insert the foam block supplied with the hardware kit behind the license plate impression. Center it horizontally.



#### **NOTE:**

The block acts as a support to push against when the rear skirt is installed.



### Step # 36

#### Installation – Rear Valance / Diffuser

Start in the center of the rear valance and insert tabs into the slots. Do not push in the tabs completely. As you reach the outer end of the rear tail lamps check both sides of the valance to verify alignment with the wheel housing.



#### **NOTE:**

The gap standard is approximately 2mm or less.

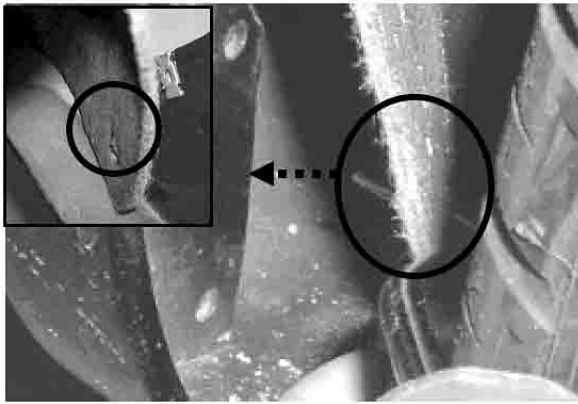
Slide the valance to the right or left as necessary to leave the same on both sides of the vehicle. Then snap in completely.



### **Step # 37**

#### **Installation – Rear Valance / Diffuser**

Install the six connector balls in the diffuser.



### **Step # 38**

#### **Installation – Rear Valance / Diffuser**

Locate lower factory grill in the wheelhouse liner.  
Using a pick or drill, pierce the valance matching the lower factory hole location.



### **Step # 39**

#### **Installation – Rear Valance / Diffuser**

Insert Torx screw and plastic nut through factory wheelhouse liner hole.

#### **New hole**



### **Step # 39 Continued**

#### **Installation – Rear Valance / Diffuser**

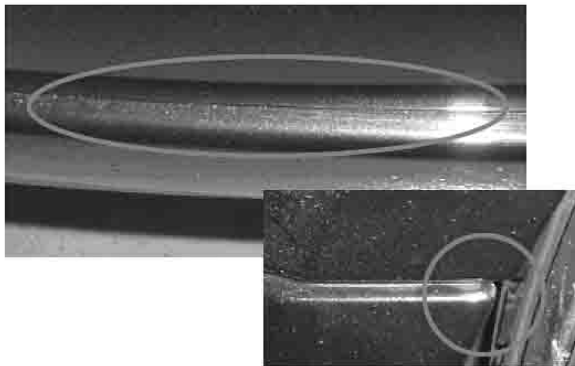
Picture illustrates the view from behind valance showing plastic nut.



### Step # 40

#### Installation – Rear Valance / Diffuser

Install **8 screws** into the bottom portion of the rear valance underneath the vehicle to secure the diffuser. (taken out in step # 26 and #27)



### Step # 41

#### Installation – Rear Valance / Diffuser

Verify proper fitment, alignment, and that all tabs are securely fastened to stock bumper.



**Quality Check**

### Installation – Exhaust tips



### Step # 42

#### Installation – Exhaust tips

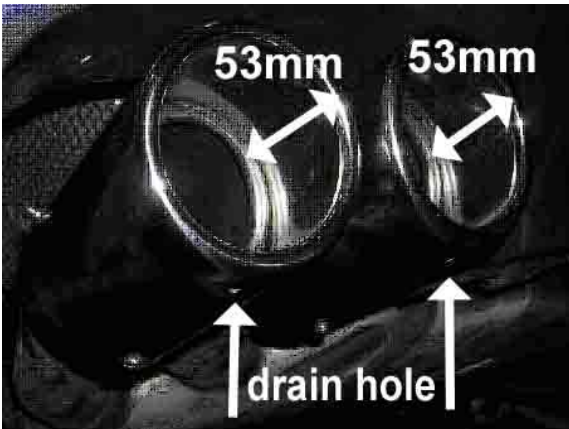
Remove the **3 mounting screws** from each tip and apply Thread locker 242 to mounting screw threads and mating threads on the tip



### Step # 43

#### Installation – Exhaust tips

Thread the **3 mounting screws** back into the tip and allow the top two mounting screws to protrude through the tip side wall 1 mm. The top **2 screws** will not be accessible once you place the new tip over the stock tip. Make sure the rain drain hole (near the rounded edge of the tip) is located in the center bottom when mounting,



### Step # 44

#### Installation – Exhaust tips

Holding the tip in the horizontal position, slide the exhaust tip assembly over the muffler tail pipe.

(With rain drain hole facing down and centered)  
Extend the new exhaust tips **53mm** from the outside of the factory tip



### Step # 44 Continued

#### Installation – Exhaust tips

Push and rotate the tip forward into position on the tail pipe. The mounting screws should be just past the beginning of the tail pipe outer sleeve. Adjust the outside tip to follow the rear valance.



### **Step # 46**

#### **Installation – Exhaust tips**

Tighten the bottom mounting screw to fully secure the tip into position. Tighten to 8Nm.

Grab the tips and try to move to make sure that the tips are securely fastened to the vehicle.



**Quality Check**

### **Installation – Roof Spoiler**



### **Step # 47**

#### **Installation – Roof Spoiler**

Check the roof spoiler for any imperfections.

Dry fit the roof spoiler and check for color harmony, gap and overall fitment. Also make sure to mark the outside of the spoilers' area to outline the primer application.



### **Step # 48**

#### **Installation – Roof Spoiler**

Thoroughly clean tailgate in application area of roof spoiler.







### **Step # 49**

#### **Installation – Roof Spoiler**

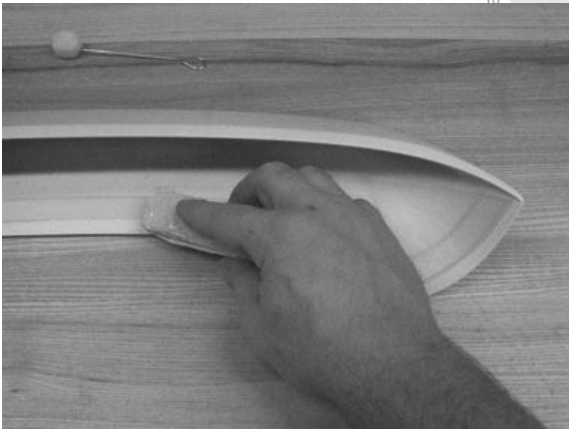
Bring roof spoiler into position, check the fit and contact points.



### **Step # 50**

#### **Installation – Roof Spoiler**

Thoroughly clean tailgate in application area of roof spoiler again and place 10 pieces of tape along the car for later use.

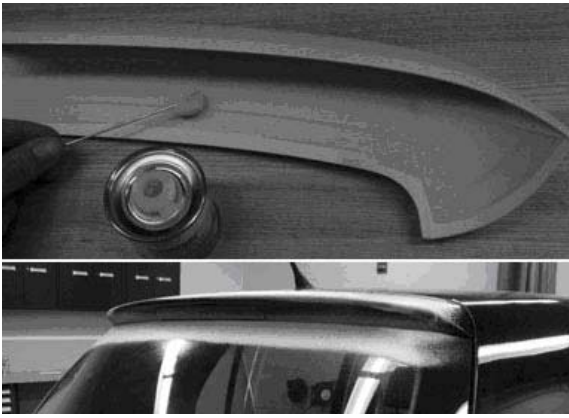


### **Step # 51**

#### **Installation – Roof Spoiler**

Use 80 grit sandpaper on roof spoiler in adhesion area and thoroughly remove any paint residue. Thoroughly clean adhesion area with cleaner.





## Step # 52

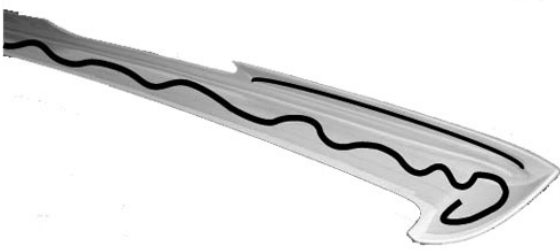
### Installation – Roof Spoiler

Apply primer, within the adhesion area, to the underside of the spoiler and to the area of the vehicle that coincides with the spoiler.



#### **NOTE:**

The spoiler will cover the entire “stock spoiler” area. Therefore, you can apply primer anywhere on this area of the vehicle.



## Step # 53

### Installation – Roof Spoiler

Apply adhesive in an even bead of approx. 5mm diameter over the entire adhesion surface.



## Step # 54

### Installation – Roof Spoiler

Position roof spoiler on the tailgate according to the way it was placed when dry fitted. Additionally press and secure roof spoiler in place with low adhesive tape.



#### **NOTE:**

Immediately remove any escaping adhesive residue with cleaner.



## Step # 56

### Installation – Roof Spoiler

Apply adhesive tape as illustrated in the figure. To strengthen the effort of the adhesive tape it is recommended that several layers of tape be used at the ends of the spoiler.



### Step # 55

#### Installation – Roof Spoiler



#### **NOTE:**

- Do not remove adhesive tape for approx. 1.5 hours.
- No mechanical load may be applied to body part for 24 hrs.
- Do not wash for 48 hours.



### Step # 57

#### Installation – Roof Spoiler

Check for any escaping adhesion residue and remove with cleaner.



**Quality Check**



**Installation Complete**

# Cautions & Warnings

**Please read these WARNINGS and CAUTIONS before proceeding with maintenance and repair work. You must answer that you have read and you understand these WARNINGS and CAUTIONS before you will be allowed to view this information.**

- If you lack the skills, tools and equipment, or a suitable workshop for any procedure described in this manual, we suggest you leave such repairs to an authorized Volkswagen retailer or other qualified shop. We especially urge you to consult an authorized Volkswagen retailer before beginning repairs on any vehicle that may still be covered wholly or in part by any of the extensive warranties issued by Volkswagen.
- Disconnect the battery negative terminal (ground strap) whenever you work on the fuel system or the electrical system. Do not smoke or work near heaters or other fire hazards. Keep an approved fire extinguisher handy.
- Volkswagen is constantly improving its vehicles and sometimes these changes, both in parts and specifications, are made applicable to earlier models. Therefore, part numbers listed in this manual are for reference only. Always check with your authorized Volkswagen retailer parts department for the latest information.
- Any time the battery has been disconnected on an automatic transmission vehicle, it will be necessary to reestablish Transmission Control Module (TCM) basic settings using the VAG 1551 Scan Tool (ST).
- Never work under a lifted vehicle unless it is solidly supported on stands designed for the purpose. Do not support a vehicle on cinder blocks, hollow tiles or other props that may crumble under continuous load. Never work under a vehicle that is supported solely by a jack. Never work under the vehicle while the engine is running.
- For vehicles equipped with an anti-theft radio, be sure of the correct radio activation code before disconnecting the battery or removing the radio. If the wrong code is entered when the power is restored, the radio may lock up and become inoperable, even if the correct code is used in a later attempt.
- If you are going to work under a vehicle on the ground, make sure that the ground is level. Block the wheels to keep the vehicle from rolling. Disconnect the battery negative terminal (ground strap) to prevent others from starting the vehicle while you are under it.
- Do not attempt to work on your vehicle if you do not feel well. You increase the danger of injury to yourself and others if you are tired, upset or have taken medicine or any other substances that may impair you or keep you from being fully alert.
- Never run the engine unless the work area is well ventilated. Carbon monoxide (CO) kills.
- Always observe good workshop practices. Wear goggles when you operate machine tools or work with acid. Wear goggles, gloves and other protective clothing whenever the job requires working with harmful substances.
- Tie long hair behind your head. Do not wear a necktie, a scarf, loose clothing, or a necklace when you work near machine tools or running engines. If your hair, clothing, or jewelry were to get caught in the machinery, severe injury could result.
- Do not re-use any fasteners that are worn or deformed in normal use. Some fasteners are designed to be used only once and are unreliable and may fail if used a second time. This includes, but is not limited to, nuts, bolts, washers, circlips and cotter pins. Always follow the recommendations in this manual - replace these fasteners with new parts where indicated, and any other time it is deemed necessary by inspection.

# Cautions & Warnings

- Illuminate the work area adequately but safely. Use a portable safety light for working inside or under the vehicle. Make sure the bulb is enclosed by a wire cage. The hot filament of an accidentally broken bulb can ignite spilled fuel or oil.
- Friction materials such as brake pads and clutch discs may contain asbestos fibers. Do not create dust by grinding, sanding, or by cleaning with compressed air. Avoid breathing asbestos fibers and asbestos dust. Breathing asbestos can cause serious diseases such as asbestosis or cancer, and may result in death.
- Finger rings should be removed so that they cannot cause electrical shorts, get caught in running machinery, or be crushed by heavy parts.
- Before starting a job, make certain that you have all the necessary tools and parts on hand. Read all the instructions thoroughly; do not attempt shortcuts. Use tools that are appropriate to the work and use only replacement parts meeting Volkswagen specifications. Makeshift tools, parts and procedures will not make good repairs.
- Catch draining fuel, oil or brake fluid in suitable containers. Do not use empty food or beverage containers that might mislead someone into drinking from them. Store flammable fluids away from fire hazards. Wipe up spills at once, but do not store the oily rags, which can ignite and burn spontaneously.
- Use pneumatic and electric tools only to loosen threaded parts and fasteners. Never use these tools to tighten fasteners, especially on light alloy parts. Always use a torque wrench to tighten fasteners to the tightening torque listed.
- Keep sparks, lighted matches, and open flame away from the top of the battery. If escaping hydrogen gas is ignited, it will ignite gas trapped in the cells and cause the battery to explode.
- Be mindful of the environment and ecology. Before you drain the crankcase, find out the proper way to dispose of the oil. Do not pour oil onto the ground, down a drain, or into a stream, pond, or lake. Consult local ordinances that govern the disposal of wastes.
- The air-conditioning (A/C) system is filled with a chemical refrigerant that is hazardous. The A/C system should be serviced only by trained automotive service technicians using approved refrigerant recovery/recycling equipment, trained in related safety precautions, and familiar with regulations governing the discharging and disposal of automotive chemical refrigerants.
- Before doing any electrical welding on vehicles equipped with anti-lock brakes (ABS), disconnect the battery negative terminal (ground strap) and the ABS control module connector.
- Do not expose any part of the A/C system to high temperatures such as open flame. Excessive heat will increase system pressure and may cause the system to burst.
- When boost-charging the battery, first remove the fuses for the Engine Control Module (ECM), the Transmission Control Module (TCM), the ABS control module, and the trip computer. In cases where one or more of these components is not separately fused, disconnect the control module connector(s).
- Some of the vehicles covered by this manual are equipped with a supplemental restraint system (SRS), that automatically deploys an airbag in the event of a frontal impact. The airbag is operated by an explosive device. Handled improperly or without adequate safeguards, it can be accidentally activated and cause serious personal injury. To guard against personal injury or airbag system failure, only trained Volkswagen Service technicians should test, disassemble or service the airbag system.

## Cautions & Warnings

- Do not quick-charge the battery (for boost starting) for longer than one minute, and do not exceed 16.5 volts at the battery with the boosting cables attached. Wait at least one minute before boosting the battery a second time.
- Never use a test light to conduct electrical tests of the airbag system. The system must only be tested by trained Volkswagen Service technicians using the VAG 1551 Scan Tool (ST) or an approved equivalent. The airbag unit must never be electrically tested while it is not installed in the vehicle.
- Some aerosol tire inflators are highly flammable. Be extremely cautious when repairing a tire that may have been inflated using an aerosol tire inflator. Keep sparks, open flame or other sources of ignition away from the tire repair area. Inflate and deflate the tire at least four times before breaking the bead from the rim. Completely remove the tire from the rim before attempting any repair.
- When driving or riding in an airbag-equipped vehicle, never hold test equipment in your hands or lap while the vehicle is in motion. Objects between you and the airbag can increase the risk of injury in an accident.

**I have read and I understand these Cautions and Warnings.**

