



Instructions Specifically Developed  
for Installation by Dealer Technicians

Description: Tiguan Volk-L Bluetooth

Part Number: 1K0 051 437 Volk-L  
1K0 051 437A Alternative Number

Fitment: Tiguan MY2008+

Quantity: 1 each

Supplier: VW Zubehoer

Publish Date: May 26, 2010



**Attention**

If you have parts that are out of shape, show paint imperfections or are not acceptable, put them aside in a clean organized manner so they can be returned to the supplier. Report damaged parts and missing parts by email to [vwaccessories@vw.com](mailto:vwaccessories@vw.com). Replacement parts will be shipped to you.

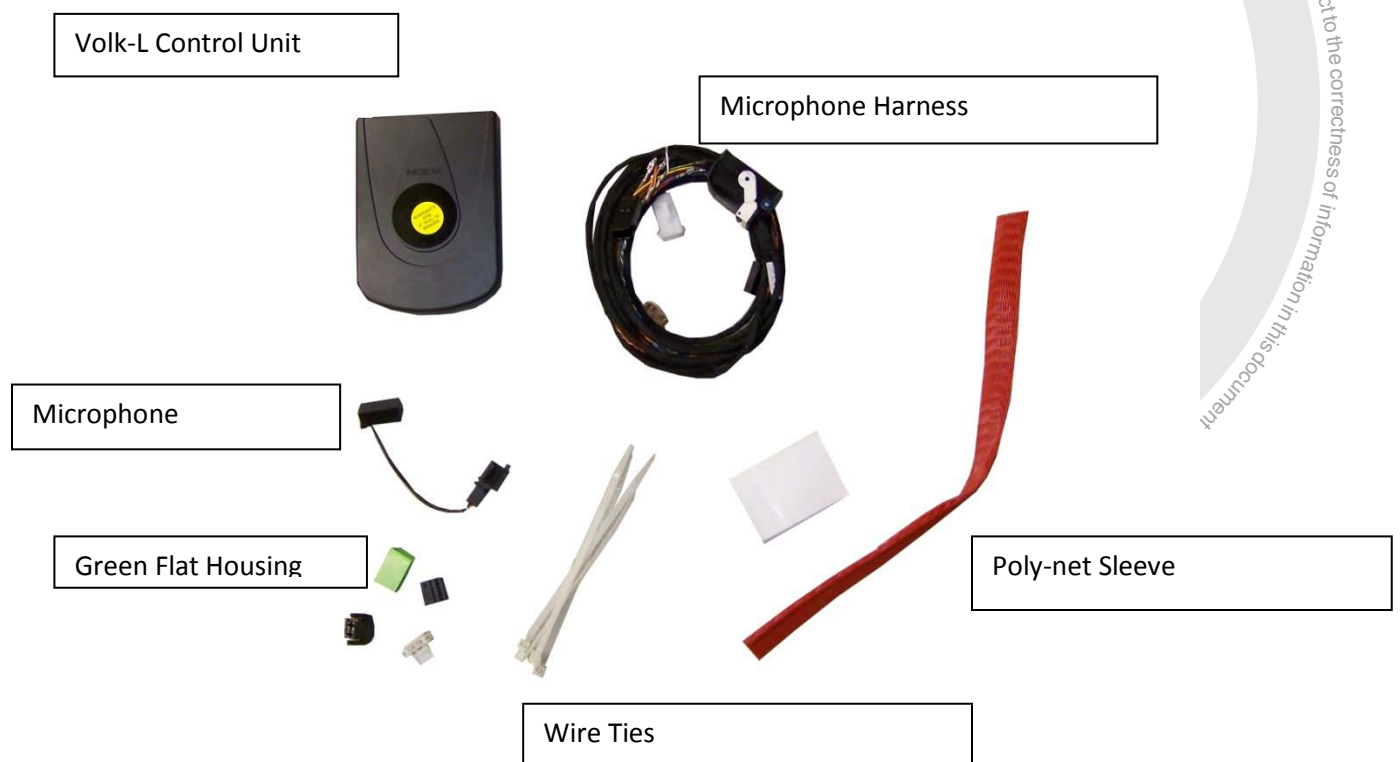
© 2010 Volkswagen of America, Inc. All rights reserved. Information contained in this document is based on the latest information available at the time of printing and is subject to the copyright and other intellectual property rights of Volkswagen of America, Inc., its affiliated companies and its licensors.

All rights are reserved to make changes at any time without notice. No part of this document may be reproduced, stored in a retrieval system, or transmitted in any form or by any means, electronic, mechanical, photocopy, recording or otherwise, nor may these materials be modified or reposted to other internet sites, with the expressed written permission of the publisher.



Description: Tiguan Volk-L  
Vehicles: Tiguan MY2008+

## Parts Contained in This Kit:



Caution:

Always wear protective gear and use caution when using hand tools throughout the installation process.



Volk-L

Description: Tiguan Volk-L  
Vehicles: Tiguan MY2008+



#### Step 1:

Switch off the ignition and all electrical equipment. Disconnect the (-) negative lead from the battery. Use a trim removal tool to remove the two upper vent covers. Use a T20 to remove the two screws behind the vent covers.



Description: Tiguan Volk-L  
Vehicles: Tiguan MY2008+

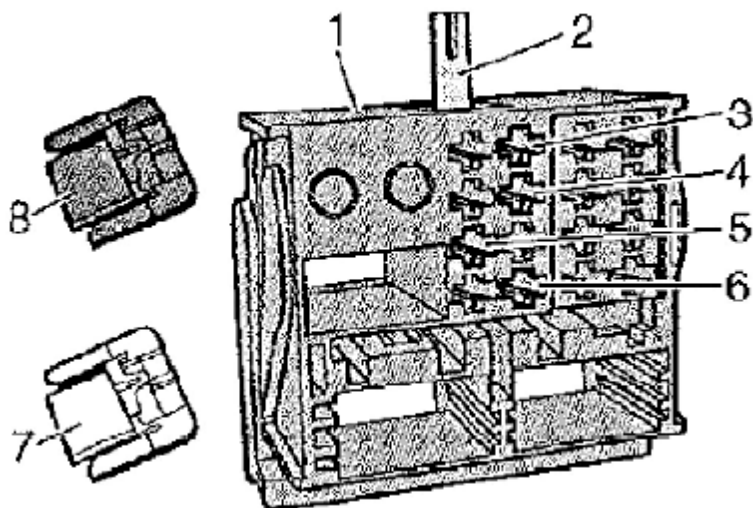


#### Step 2:

Using a trim removal tool, remove the radio surround. Use a T20 to remove the four screws from the radio tabs. Remove the radio from the radio compartment. Unplug the radio harness and accessory leads from the back of the radio. Place the radio in a safe place for reinstallation



Description: Tiguan Volk-L  
Vehicles: Tiguan MY2008+



### Step 3:

Remove locking pin (2) from the radio plug connector (1). Using a pin removal tool from the VAS 1978B, remove the following wires from the radio plug connector and lock them into the

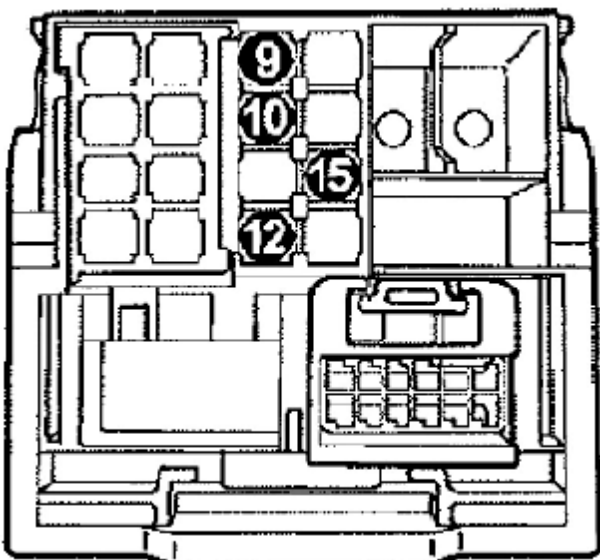
Wire Color	PIN from Radio Plug Connector	PIN in Flat Contact Housing
Orange/Violet (CAN bus Lo)	PIN 9 (3)	PIN 3 black plug
Orange/Brown (CAN bus High)	PIN 10 (4)	PIN 4 black plug
Red/Yellow (30 Battery Power)	PIN 15 (5)	PIN 2 black plug
Brown (Ground)	PIN 12 (6)	PIN 1 black plug

supplied flat black contact housing.



Description: Tiguan Volk-L

Vehicles: Tiguan MY2008+



Step 4:

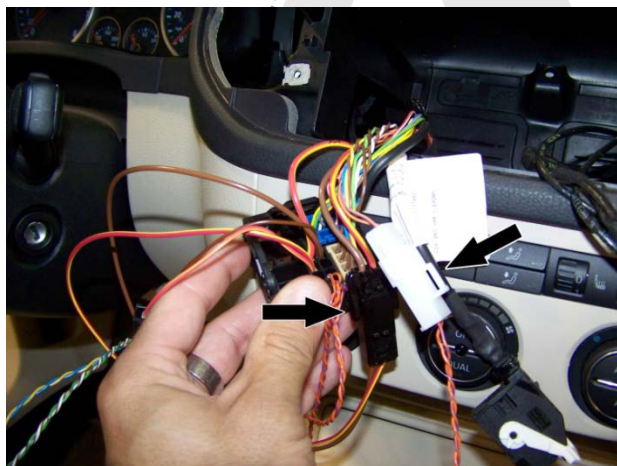
Insert the single core wires of the wiring set into the radio connection plug using the following table as a guide.

Wire Color	Radio Connecting Plug PIN
Orange/Violet	PIN 9
Orange/Brown	PIN 10
Red/Yellow	PIN 15
Brown	PIN 12

Insert the locking pin (2) back into the radio connecting plug.

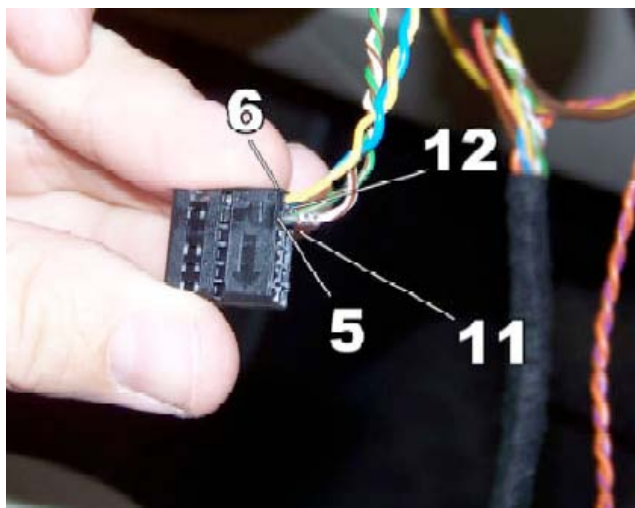


Description: Tiguan Volk-L  
Vehicles: Tiguan MY2008+



**Step 5:**

Plug the black connector that you just placed on the radio harness into the appropriate connector on the kit harness.



**Step 6:**

Assemble the bar contact housing supplied in the kit using the following table as a guide.

Wire Color	Radio Connecting Plug PIN
White/Brown	PIN 5 (Left negative)
Yellow	PIN 6 (Right negative)
Green/Brown	PIN 11 (Left positive)
Blue	PIN 12 (Right positive)

Note: If the radio does not already have a green connector, use the green, flat-contact housing provided with the kit. Do not place wires in the blue connector. If the wires are placed in the

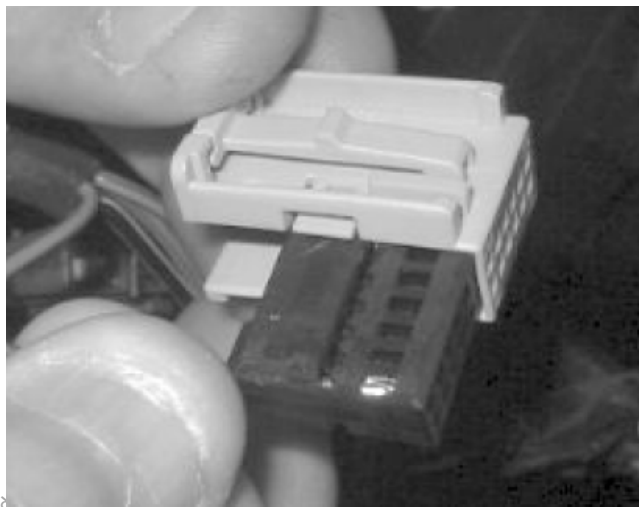




Description: Tiguan Volk-L

Vehicles: Tiguan MY2008+

blue connector you will not have audio. On vehicles equipped with a factory installed CD changer, the green, flat-contact housing and black insert are already installed. In this case, use the installed green, flat-contact housing.



**Step 7:**

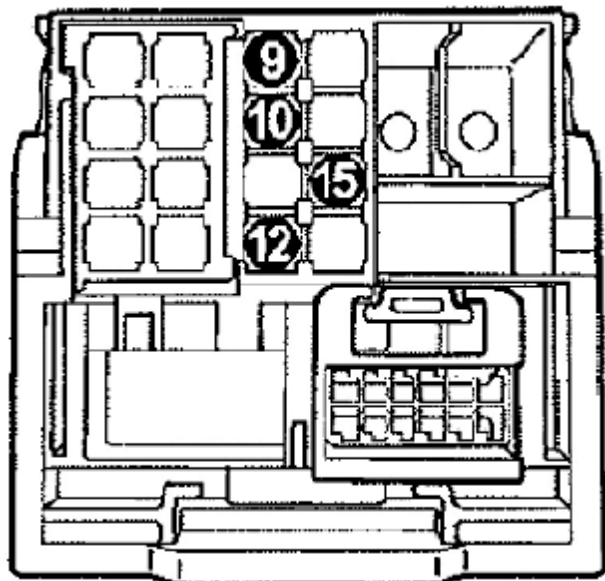
After the bar contact is assembled, slide the bar contact inside the green housing supplied in the kit.





Description: Tiguan Volk-L

Vehicles: Tiguan MY2008+



#### Step 8:

Insert the wiring set in the green flat housing (1) into the radio connecting plug.



#### Step 9:

Plug the end of the wire harness into the control unit and lock it in place. Slide the protective poly-net sleeve that is supplied in the kit over the control unit and wire tie both ends of the sleeve. Place the control unit into the radio opening and secure it under the dash brace.

Note: Excess wiring harness also goes under the center dash brace. It should be secured with wire ties.



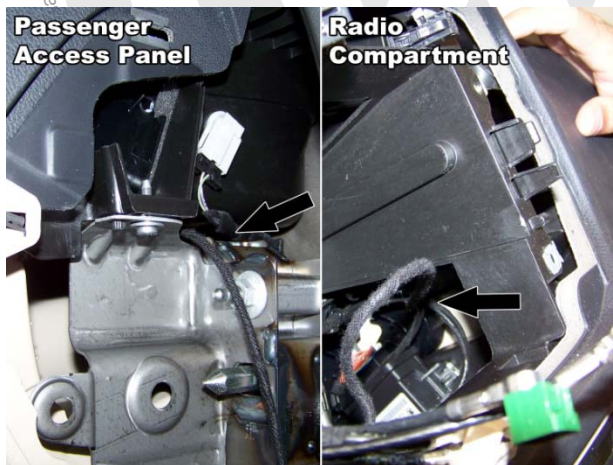
Description: Tiguan Volk-L

Vehicles: Tiguan MY2008+



Step 10:

Remove the passenger side dash access panel and trim piece.



Step 11:

Route the microphone harness through the passenger side opening of the radio compartment, behind the glove box and out the passenger side access panel. Secure the harness behind the brace in the access panel area with the supplied wire ties.

Connect the wiring harness and antenna to the back of the radio. Plug the airbag indicator light harness into the light display



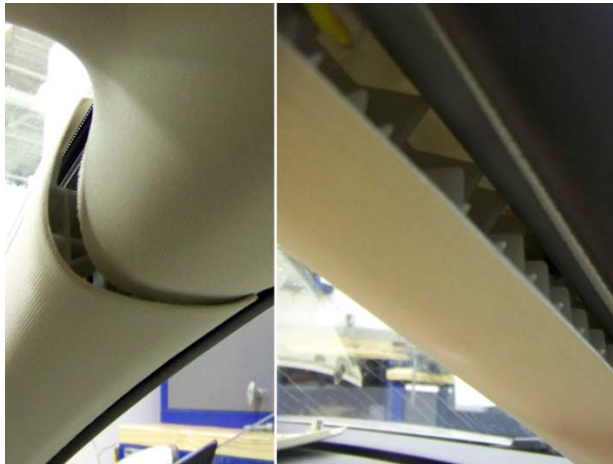
Description: Tiguan Volk-L

Vehicles: Tiguan MY2008+



#### Step 12:

Reinstall the radio using a T20 torx bit to screw all four screws into place. Reinstall the radio trim and secure with the two screws removed in Step 1. Place the vent covers back into the radio trim panel.



#### Step 13:

Remove Upper A pillar trim. See instructions in ElsaWeb, Repair Manual, Body, 70 Interior Trim, Removal and Installation, Pillar Trim, Upper A-Pillar Trim



Description: Tiguan Volk-L

Vehicles: Tiguan MY2008+



Step 14:

Using a T20 torx bit, remove the two screws on the passenger side sun screen.





Description: Tiguan Volk-L  
Vehicles: Tiguan MY2008+



Step 15:

Remove the glasses containment console in the overhead console to expose two T20 screws. Use a T20 torx bit to remove the two screws.



Step 16:

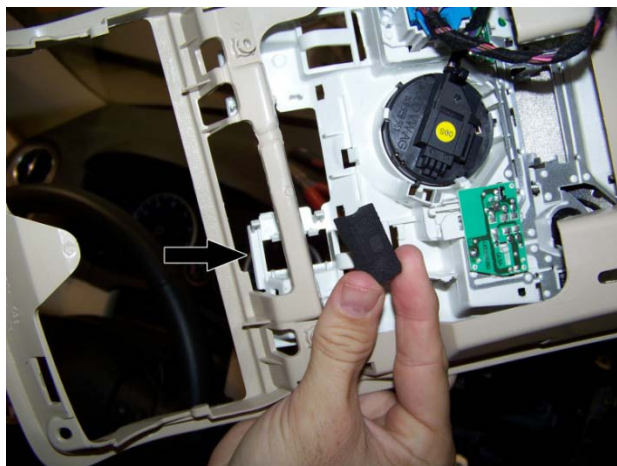
Remove the front most access panel on the overhead console to expose two T20 screws. Use a T20 torx bit to remove the two screws.





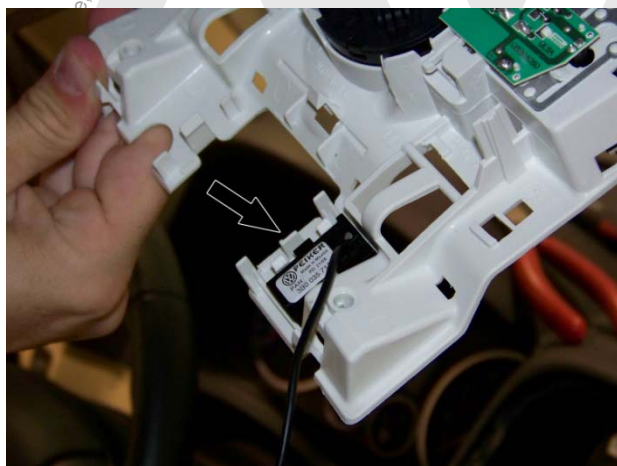
Description: Tiguan Volk-L

Vehicles: Tiguan MY2008+



Step 17:

Locate and remove the foam insert in the overhead compartment.



Step 18:

Place the microphone into the foam insert location in the overhead console.



Description: Tiguan Volk-L  
Vehicles: Tiguan MY2008+



**Step 19:**

Route the microphone harness up the A-pillar into the front edge of the headliner into the center overhead compartment area. Use wire ties to connect the harness to the drain tube attachments. Reinstall the two sun screen screws. Reinstall the A-pillar panel passenger side trim piece and access panel. Reinstall the A-pillar trim. See instructions in ElsaWeb, Repair Manual, Body, 70 Interior Trim, Removal and Installation, Pillar Trim, Upper A-Pillar Trim.



**Step 20:**

Connect the microphone to the microphone harness and reinstall the overhead console. Reinstall the headliner, overhead console and lighting. Reconnect the (-) negative battery lead.





Description: Tiguan Volk-L  
Vehicles: Tiguan MY2008+

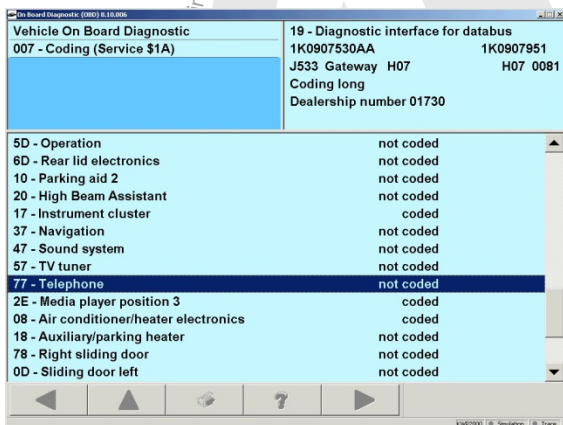
#### Step 21:

Comfort functions need to be reset (basic settings). Also reset window one-touch operation, clock and radio station presets.

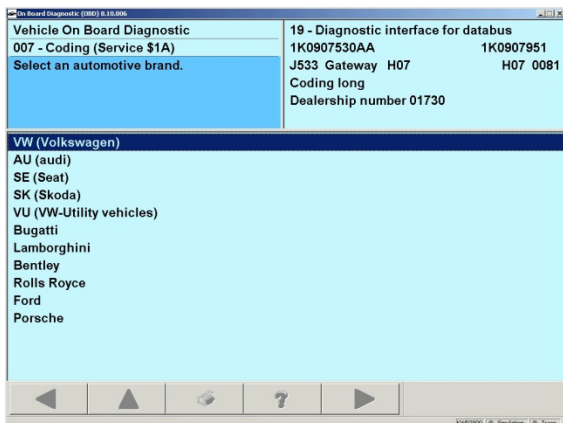
#### Step 22:

Connect the VAS 5051/5052 to the vehicle data link connector.

- Select Vehicle Self-Diagnosis
- 19 Diagnostic Interface for databus
- Select 77 – Telephone. It will change to coded when selected



Note: Do not change the following vehicle type screens. Changing vehicle type settings causes the vehicle to search for components it may not be equipped with.

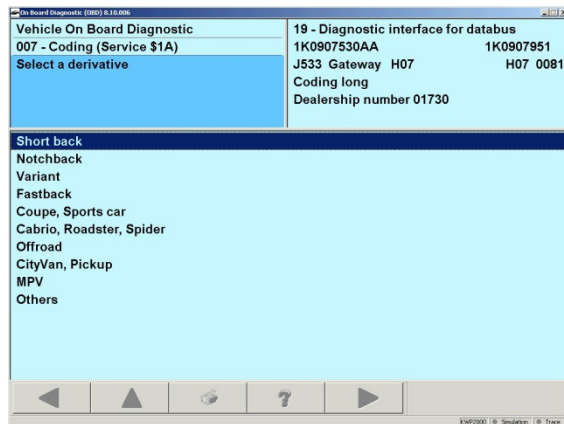


- Select the forward arrow through the automotive brand

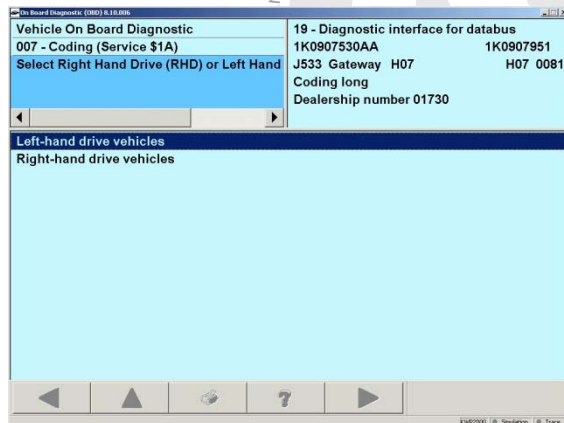


Description: Tiguan Volk-L

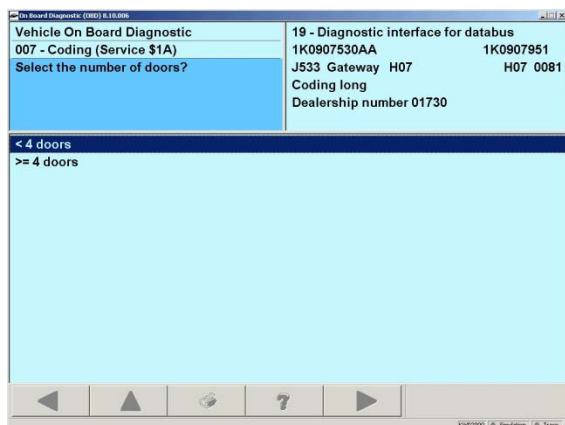
Vehicles: Tiguan MY2008+



- Deviation



- Right- or left-hand drive

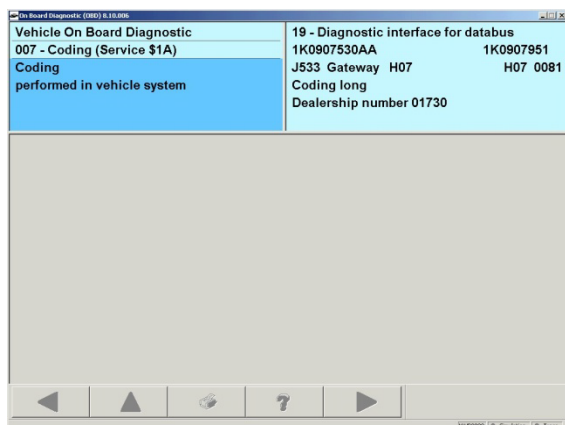




Description: Tiguan Volk-L

Vehicles: Tiguan MY2008+

- Number of doors screens



- The final screen indicates that the coding has been performed
- Press the up button to exit the coding, or the back button to go back to the Vehicle On-Board Diagnostics screen

Step 29:

Now use the 5051 to code the Volk-L module – to tell the module what it is connected to.

- Select Vehicle Self-Diagnosis
- Select On Board Diagnostic (OBD)
- Select address word 77 Telephone
- 008 Coding (Service \$22)
- Check/Clear Faults
- Turn on transport mode
- After gaining access to telephone coding, enter the following parameters into the code.  
Note: You will not be able to input the \$ sign. Simply place the number in the correct byte and press Q to complete the input of that number.

Byte	Devices with stereo phone input
0	\$41
1	\$21
2	\$20

- Follow the menu until you are asked to push “OK” to perform the coding. Once you have selected ok, you may go back to the main menu. Failure to select OK or terminating the coding early results in a coding error.



Description: Tiguan Volk-L  
Vehicles: Tiguan MY2008+

Step 30:

### Functional Check and Final Fitting

Check the function of the hands free phone kit by pairing a mobile telephone to the Volk-L system and make a call. End the call using the multi-function steering wheel – if equipped - to check the function of the Volk-L system with the multi-function steering wheel.

To pair your phone to the Volk-L system:

- Switch on your mobile phone and the vehicle's ignition
- Activate the Bluetooth feature in your mobile phone and search for Bluetooth devices or audio enhancements
- Select "VW UHV"
- Enter the Bluetooth pass code "0000" on your mobile phone. On some phones, you will need to confirm the connection separately
- The Volk-L system is now paired with your mobile phone and ready for service

On vehicles with an RNS 510 or Premium 8 radio, the radio must be set to support Bluetooth audio streaming, allowing music from a Bluetooth device to be played over the radio. To enable radio streaming:

- Turn the radio on
- Select "Setup"
- Select "Media"
- Select "Activate Bluetooth Audio"

The radio will now play music from a Bluetooth device.

# Cautions & Warnings

**Please read these WARNINGS and CAUTIONS before proceeding with maintenance and repair work. You must answer that you have read and you understand these WARNINGS and CAUTIONS before you will be allowed to view this information.**

- If you lack the skills, tools and equipment, or a suitable workshop for any procedure described in this manual, we suggest you leave such repairs to an authorized Volkswagen retailer or other qualified shop. We especially urge you to consult an authorized Volkswagen retailer before beginning repairs on any vehicle that may still be covered wholly or in part by any of the extensive warranties issued by Volkswagen.
- Disconnect the battery negative terminal (ground strap) whenever you work on the fuel system or the electrical system. Do not smoke or work near heaters or other fire hazards. Keep an approved fire extinguisher handy.
- Volkswagen is constantly improving its vehicles and sometimes these changes, both in parts and specifications, are made applicable to earlier models. Therefore, part numbers listed in this manual are for reference only. Always check with your authorized Volkswagen retailer parts department for the latest information.
- Any time the battery has been disconnected on an automatic transmission vehicle, it will be necessary to reestablish Transmission Control Module (TCM) basic settings using the VAG 1551 Scan Tool (ST).
- Never work under a lifted vehicle unless it is solidly supported on stands designed for the purpose. Do not support a vehicle on cinder blocks, hollow tiles or other props that may crumble under continuous load. Never work under a vehicle that is supported solely by a jack. Never work under the vehicle while the engine is running.
- For vehicles equipped with an anti-theft radio, be sure of the correct radio activation code before disconnecting the battery or removing the radio. If the wrong code is entered when the power is restored, the radio may lock up and become inoperable, even if the correct code is used in a later attempt.
- If you are going to work under a vehicle on the ground, make sure that the ground is level. Block the wheels to keep the vehicle from rolling. Disconnect the battery negative terminal (ground strap) to prevent others from starting the vehicle while you are under it.
- Do not attempt to work on your vehicle if you do not feel well. You increase the danger of injury to yourself and others if you are tired, upset or have taken medicine or any other substances that may impair you or keep you from being fully alert.
- Never run the engine unless the work area is well ventilated. Carbon monoxide (CO) kills.
- Always observe good workshop practices. Wear goggles when you operate machine tools or work with acid. Wear goggles, gloves and other protective clothing whenever the job requires working with harmful substances.
- Tie long hair behind your head. Do not wear a necktie, a scarf, loose clothing, or a necklace when you work near machine tools or running engines. If your hair, clothing, or jewelry were to get caught in the machinery, severe injury could result.
- Do not re-use any fasteners that are worn or deformed in normal use. Some fasteners are designed to be used only once and are unreliable and may fail if used a second time. This includes, but is not limited to, nuts, bolts, washers, circlips and cotter pins. Always follow the recommendations in this manual - replace these fasteners with new parts where indicated, and any other time it is deemed necessary by inspection.

# Cautions & Warnings

- Illuminate the work area adequately but safely. Use a portable safety light for working inside or under the vehicle. Make sure the bulb is enclosed by a wire cage. The hot filament of an accidentally broken bulb can ignite spilled fuel or oil.
- Friction materials such as brake pads and clutch discs may contain asbestos fibers. Do not create dust by grinding, sanding, or by cleaning with compressed air. Avoid breathing asbestos fibers and asbestos dust. Breathing asbestos can cause serious diseases such as asbestosis or cancer, and may result in death.
- Finger rings should be removed so that they cannot cause electrical shorts, get caught in running machinery, or be crushed by heavy parts.
- Before starting a job, make certain that you have all the necessary tools and parts on hand. Read all the instructions thoroughly; do not attempt shortcuts. Use tools that are appropriate to the work and use only replacement parts meeting Volkswagen specifications. Makeshift tools, parts and procedures will not make good repairs.
- Catch draining fuel, oil or brake fluid in suitable containers. Do not use empty food or beverage containers that might mislead someone into drinking from them. Store flammable fluids away from fire hazards. Wipe up spills at once, but do not store the oily rags, which can ignite and burn spontaneously.
- Use pneumatic and electric tools only to loosen threaded parts and fasteners. Never use these tools to tighten fasteners, especially on light alloy parts. Always use a torque wrench to tighten fasteners to the tightening torque listed.
- Keep sparks, lighted matches, and open flame away from the top of the battery. If escaping hydrogen gas is ignited, it will ignite gas trapped in the cells and cause the battery to explode.
- Be mindful of the environment and ecology. Before you drain the crankcase, find out the proper way to dispose of the oil. Do not pour oil onto the ground, down a drain, or into a stream, pond, or lake. Consult local ordinances that govern the disposal of wastes.
- The air-conditioning (A/C) system is filled with a chemical refrigerant that is hazardous. The A/C system should be serviced only by trained automotive service technicians using approved refrigerant recovery/recycling equipment, trained in related safety precautions, and familiar with regulations governing the discharging and disposal of automotive chemical refrigerants.
- Before doing any electrical welding on vehicles equipped with anti-lock brakes (ABS), disconnect the battery negative terminal (ground strap) and the ABS control module connector.
- Do not expose any part of the A/C system to high temperatures such as open flame. Excessive heat will increase system pressure and may cause the system to burst.
- When boost-charging the battery, first remove the fuses for the Engine Control Module (ECM), the Transmission Control Module (TCM), the ABS control module, and the trip computer. In cases where one or more of these components is not separately fused, disconnect the control module connector(s).
- Some of the vehicles covered by this manual are equipped with a supplemental restraint system (SRS), that automatically deploys an airbag in the event of a frontal impact. The airbag is operated by an explosive device. Handled improperly or without adequate safeguards, it can be accidentally activated and cause serious personal injury. To guard against personal injury or airbag system failure, only trained Volkswagen Service technicians should test, disassemble or service the airbag system.

## Cautions & Warnings

- Do not quick-charge the battery (for boost starting) for longer than one minute, and do not exceed 16.5 volts at the battery with the boosting cables attached. Wait at least one minute before boosting the battery a second time.
- Never use a test light to conduct electrical tests of the airbag system. The system must only be tested by trained Volkswagen Service technicians using the VAG 1551 Scan Tool (ST) or an approved equivalent. The airbag unit must never be electrically tested while it is not installed in the vehicle.
- Some aerosol tire inflators are highly flammable. Be extremely cautious when repairing a tire that may have been inflated using an aerosol tire inflator. Keep sparks, open flame or other sources of ignition away from the tire repair area. Inflate and deflate the tire at least four times before breaking the bead from the rim. Completely remove the tire from the rim before attempting any repair.
- When driving or riding in an airbag-equipped vehicle, never hold test equipment in your hands or lap while the vehicle is in motion. Objects between you and the airbag can increase the risk of injury in an accident.

**I have read and I understand these Cautions and Warnings.**

