



## **Instructions Specifically Developed for Dealer Technicians**

**Description:** Jetta 2005.5> 6 CD Changer

**Part Number:** 1J6 035 111 CD Changer  
000 051 324B Harness and Bracket  
1J0 051 445 D Harness Adaptor  
ZVW 832 002 Bracket  
N 015 0825 M6 Nut

**Quantity:** 1 each Component  
2 each Bracket  
4 each Nut

**Supplier:** Votex GmbH / Panasonic

**Publish Date:** 3 June 2005



### **Attention:**

**Before starting, make sure painted and trim surfaces are protected to avoid scratching during installation process of the items. Use proper surface protection covers and work attire free of dirt and grease**



### **Caution:**

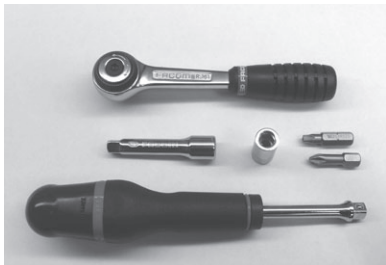
**Read entire instructions thoroughly before starting. Installation should be performed only by a qualified person. Observe all safety precautions when working beneath a vehicle. Beware of sharp edges. Always wear safety glasses for eye protection.**



Part Number: See Cover Page  
Description: CD Changer Hardware  
Supplier: Votex GmbH / Panasonic

---

## Tools Required For Installation

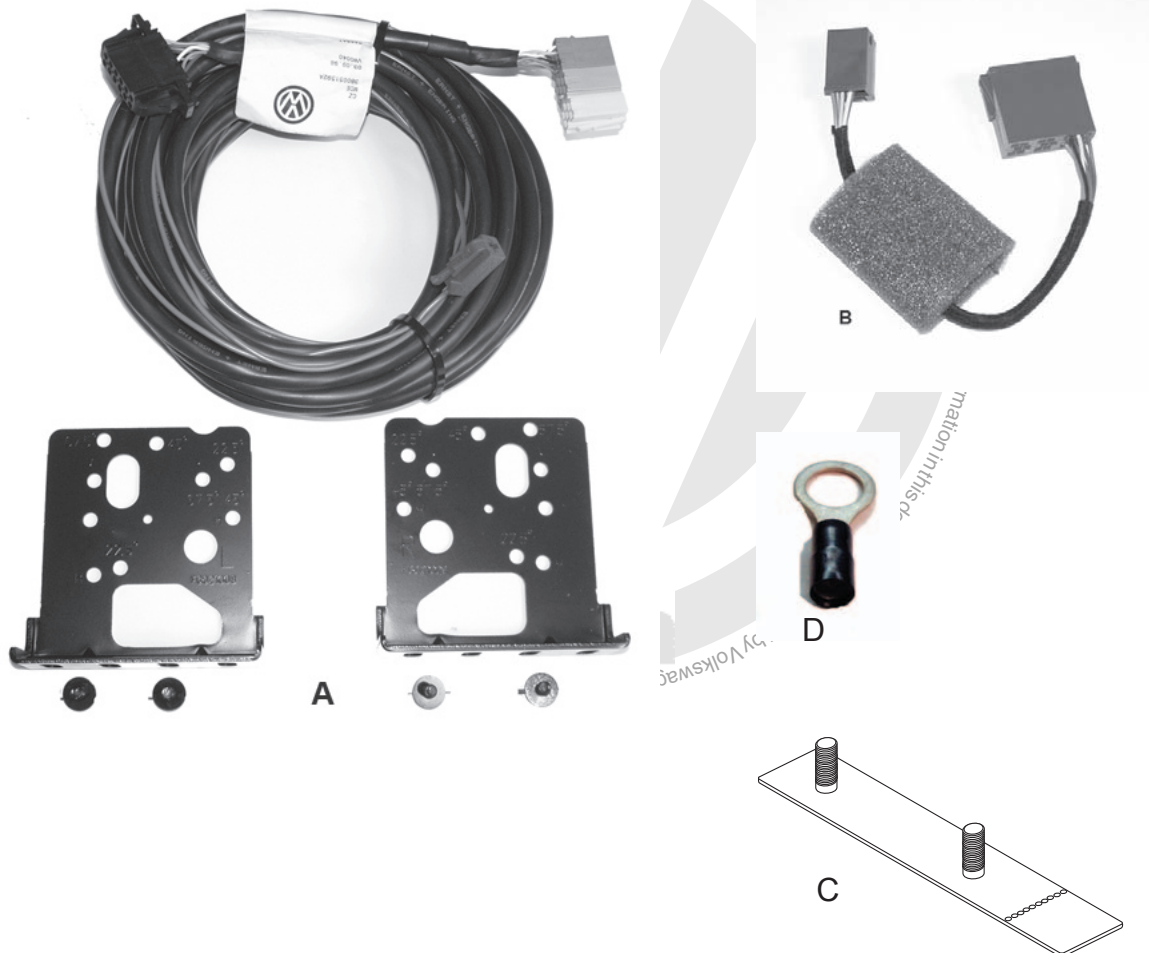


Drill Motor  
UNIBIT step drill  
1/4 Drive Ratchet  
Extension  
10mm socket  
Philips head screwdriver  
Wire striper and crimper  
Panel tool  
Primer



Part Number: See Cover Page  
Description: CD Changer Hardware  
Supplier: Votex GmbH / Panasonic

## Installation Kit



- 1ea - 1J6 035 111 CD Changer
- A - 1ea - 000 051 324 B CD Changer Harness and brackets
- B - 1ea - 1J0 051 445 D Harness Adaptor
- C - 2ea - ZVW 832 002
- 4ea - N 015 0825 M6 Nuts
- D - 1ea - eyelet wiring terminal



Part Number: See Cover Page  
Description: CD Changer Hardware  
Supplier: Votex GmbH / Panasonic



#### Step#01

Place a protective drop cloth on the trunk floor and trunk sill.  
Remove the threaded button and push clip from the trunk liner

Button and Clip P/N:  
N 095 819 01 Threaded Button  
191 867 199 Push Clip



#### NOTE:

Key out of ignition switch and radio off.



#### Step#02

Use the UNIBIT to enlarge the hole in the support for the hat shelf on the driver's side to 18mm.



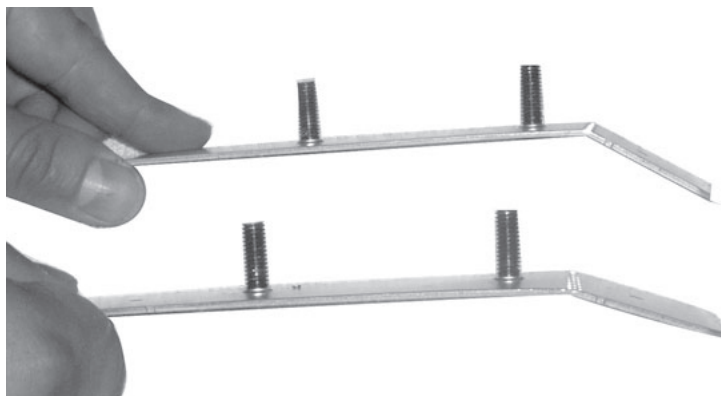
#### NOTE:

After enlarging the hole apply primer to the bare metal.



#### CAUTION:

Do not drill too deep. You will damage interior trim parts



#### Step#03

Bend the brackets at the drilled end.



Part Number: See Cover Page  
Description: CD Changer Hardware  
Supplier: Votex GmbH / Panasonic



#### Step#04

Install the brackets in the holes as shown in the photograph.



#### Step#05

Install the L brackets on the CD changer and attach to the brackets in the hat shelf with 10mm hex nuts



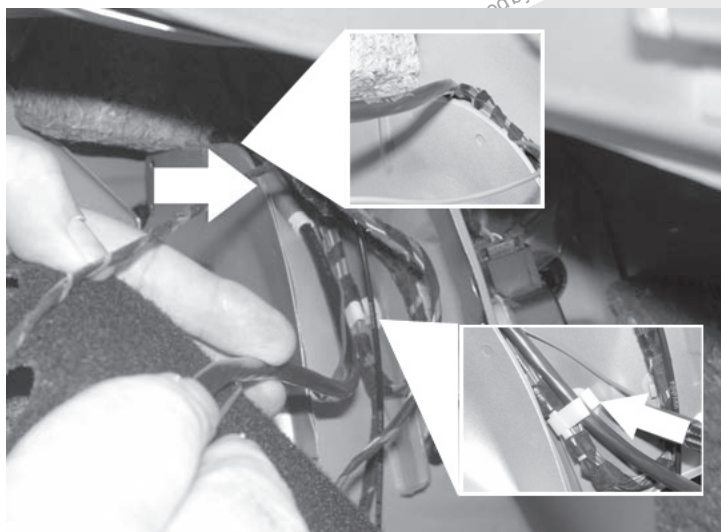
#### Step#06

Connect the harness to the CD changer and remove the green and yellow connectors.





Part Number: See Cover Page  
Description: CD Changer Hardware  
Supplier: Votex GmbH / Panasonic



#### Step#07

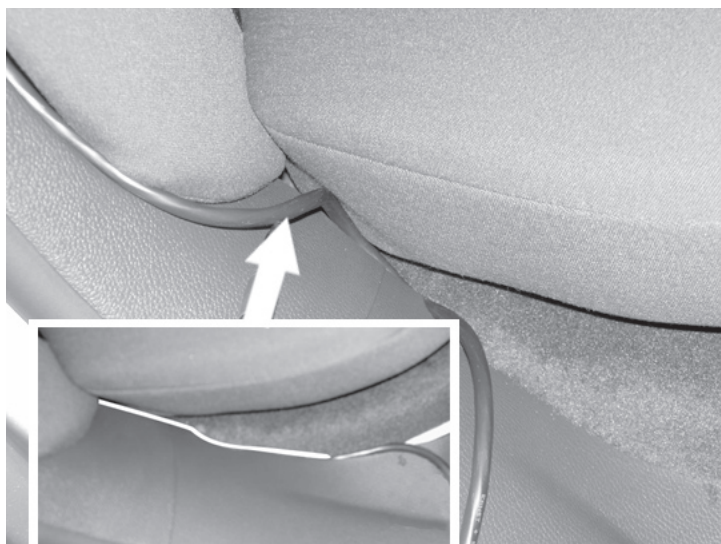
Route the harness above the trunk liner and through the opening just below the shoulder belt retractor and secure in the harness retainer clip as shown in the photograph.



#### Step#08

Use VESIS instructions to loosen the seat bolster and route the harness with the vehicle harness and connector to the bottom of the sill trim.

Pull the remaining length of the harness into the passenger compartment

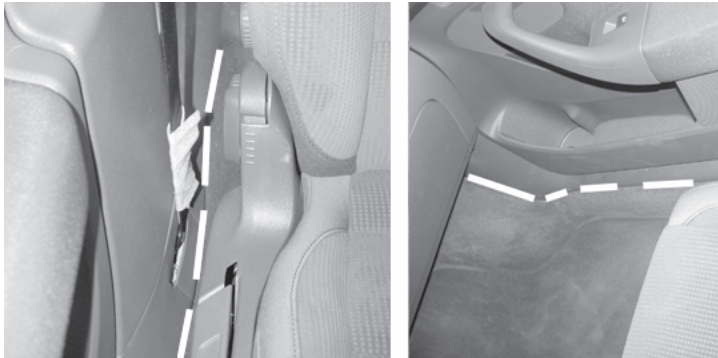


#### Step#09

Tuck the harness between the seat pedestal and trim using a panel tool.



Part Number: See Cover Page  
Description: CD Changer Hardware  
Supplier: Votex GmbH / Panasonic



#### Step#10

Continue to tuck the harness under the sill trim to the bottom of the instrument panel



#### Step#11

Lower the passenger side trim panel under the glove box and route the harness to the center console behind the radio.



#### Step#12

Remove the radio per VESIS instructions and route the harness into the radio bay. Route the harness into the radio bay with the antenna wire.

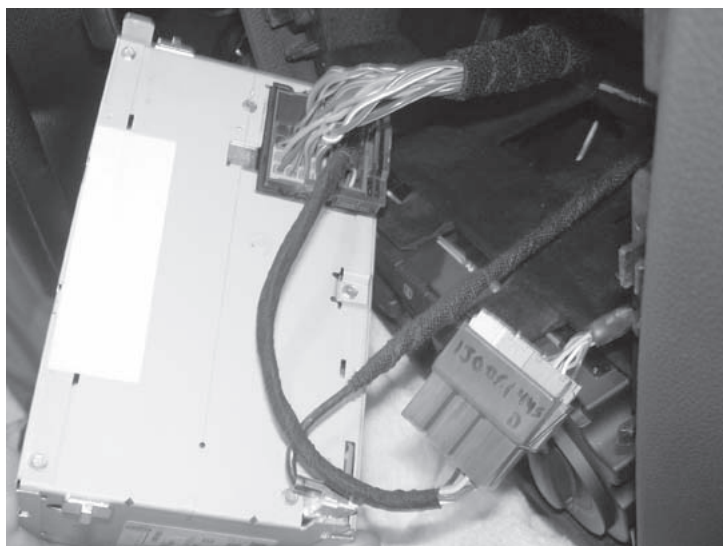


Part Number: See Cover Page  
Description: CD Changer Hardware  
Supplier: Votex GmbH / Panasonic



#### Step#13

Reinstall the green and yellow connectors and install the harness connector in the adaptor.



#### Step#14

Install the blue connector of the adaptor in the Radio Block Connector.



#### NOTE:

Wrap connector with supplied foam and tape in place to insure no movement. Failure to do so may cause a rattle in the radio area.



#### Step#15

Remove A pillar trim. Cut the existing connector from the brown wire attached to the harness and install an eyelet terminal. Install at the grounding connector behind the A pillar trim and tighten to 9Nm.



#### NOTE:

Verify ground stud torque on harness connection, if left loose it can cause problems.





Part Number: See Cover Page  
Description: CD Changer Hardware  
Supplier: Votex GmbH / Panasonic



#### Step 16

For the vehicle systems to recognize the CD changer it will require reprogramming. To reprogram connect the VAS 5051 On Board diagnostic scan tool to the vehicle DLC.

- Select "Vehicle self diagnosis"
- Select "56 – Radio"
- Check for DTCs
- Select "07 – Code control unit"
- In Location 1 Enter 2 for CD\_changer
- Press "Q" button
- Exit "Diagnosis"

#### Step#15

Install the radio and A pillar trim. Depress the CD magazine eject button.

If magazine ejects the system can be tested with a CD.

Load a CD in the magazine and insert the magazine. Select the CD to be played by the sound system,

If the CD is selected and plays program the vehicle to recognize the CD changer.



#### NOTE:

If the magazine does not eject, the CD changer may require replacement.

If the Sound system shows an ERROR message:

- Check all connectors and ground
- Try a new magazine
- Replace the CD Changer.



Remove the drop cloth, Clean and inspect all areas of the installation

# Cautions & Warnings

**Please read these WARNINGS and CAUTIONS before proceeding with maintenance and repair work. You must answer that you have read and you understand these WARNINGS and CAUTIONS before you will be allowed to view this information.**

- If you lack the skills, tools and equipment, or a suitable workshop for any procedure described in this manual, we suggest you leave such repairs to an authorized Volkswagen retailer or other qualified shop. We especially urge you to consult an authorized Volkswagen retailer before beginning repairs on any vehicle that may still be covered wholly or in part by any of the extensive warranties issued by Volkswagen.
- Disconnect the battery negative terminal (ground strap) whenever you work on the fuel system or the electrical system. Do not smoke or work near heaters or other fire hazards. Keep an approved fire extinguisher handy.
- Volkswagen is constantly improving its vehicles and sometimes these changes, both in parts and specifications, are made applicable to earlier models. Therefore, part numbers listed in this manual are for reference only. Always check with your authorized Volkswagen retailer parts department for the latest information.
- Any time the battery has been disconnected on an automatic transmission vehicle, it will be necessary to reestablish Transmission Control Module (TCM) basic settings using the VAG 1551 Scan Tool (ST).
- Never work under a lifted vehicle unless it is solidly supported on stands designed for the purpose. Do not support a vehicle on cinder blocks, hollow tiles or other props that may crumble under continuous load. Never work under a vehicle that is supported solely by a jack. Never work under the vehicle while the engine is running.
- For vehicles equipped with an anti-theft radio, be sure of the correct radio activation code before disconnecting the battery or removing the radio. If the wrong code is entered when the power is restored, the radio may lock up and become inoperable, even if the correct code is used in a later attempt.
- If you are going to work under a vehicle on the ground, make sure that the ground is level. Block the wheels to keep the vehicle from rolling. Disconnect the battery negative terminal (ground strap) to prevent others from starting the vehicle while you are under it.
- Do not attempt to work on your vehicle if you do not feel well. You increase the danger of injury to yourself and others if you are tired, upset or have taken medicine or any other substances that may impair you or keep you from being fully alert.
- Never run the engine unless the work area is well ventilated. Carbon monoxide (CO) kills.
- Always observe good workshop practices. Wear goggles when you operate machine tools or work with acid. Wear goggles, gloves and other protective clothing whenever the job requires working with harmful substances.
- Tie long hair behind your head. Do not wear a necktie, a scarf, loose clothing, or a necklace when you work near machine tools or running engines. If your hair, clothing, or jewelry were to get caught in the machinery, severe injury could result.
- Do not re-use any fasteners that are worn or deformed in normal use. Some fasteners are designed to be used only once and are unreliable and may fail if used a second time. This includes, but is not limited to, nuts, bolts, washers, circlips and cotter pins. Always follow the recommendations in this manual - replace these fasteners with new parts where indicated, and any other time it is deemed necessary by inspection.

# Cautions & Warnings

- Illuminate the work area adequately but safely. Use a portable safety light for working inside or under the vehicle. Make sure the bulb is enclosed by a wire cage. The hot filament of an accidentally broken bulb can ignite spilled fuel or oil.
- Friction materials such as brake pads and clutch discs may contain asbestos fibers. Do not create dust by grinding, sanding, or by cleaning with compressed air. Avoid breathing asbestos fibers and asbestos dust. Breathing asbestos can cause serious diseases such as asbestosis or cancer, and may result in death.
- Finger rings should be removed so that they cannot cause electrical shorts, get caught in running machinery, or be crushed by heavy parts.
- Before starting a job, make certain that you have all the necessary tools and parts on hand. Read all the instructions thoroughly; do not attempt shortcuts. Use tools that are appropriate to the work and use only replacement parts meeting Volkswagen specifications. Makeshift tools, parts and procedures will not make good repairs.
- Catch draining fuel, oil or brake fluid in suitable containers. Do not use empty food or beverage containers that might mislead someone into drinking from them. Store flammable fluids away from fire hazards. Wipe up spills at once, but do not store the oily rags, which can ignite and burn spontaneously.
- Use pneumatic and electric tools only to loosen threaded parts and fasteners. Never use these tools to tighten fasteners, especially on light alloy parts. Always use a torque wrench to tighten fasteners to the tightening torque listed.
- Keep sparks, lighted matches, and open flame away from the top of the battery. If escaping hydrogen gas is ignited, it will ignite gas trapped in the cells and cause the battery to explode.
- Be mindful of the environment and ecology. Before you drain the crankcase, find out the proper way to dispose of the oil. Do not pour oil onto the ground, down a drain, or into a stream, pond, or lake. Consult local ordinances that govern the disposal of wastes.
- The air-conditioning (A/C) system is filled with a chemical refrigerant that is hazardous. The A/C system should be serviced only by trained automotive service technicians using approved refrigerant recovery/recycling equipment, trained in related safety precautions, and familiar with regulations governing the discharging and disposal of automotive chemical refrigerants.
- Before doing any electrical welding on vehicles equipped with anti-lock brakes (ABS), disconnect the battery negative terminal (ground strap) and the ABS control module connector.
- Do not expose any part of the A/C system to high temperatures such as open flame. Excessive heat will increase system pressure and may cause the system to burst.
- When boost-charging the battery, first remove the fuses for the Engine Control Module (ECM), the Transmission Control Module (TCM), the ABS control module, and the trip computer. In cases where one or more of these components is not separately fused, disconnect the control module connector(s).
- Some of the vehicles covered by this manual are equipped with a supplemental restraint system (SRS), that automatically deploys an airbag in the event of a frontal impact. The airbag is operated by an explosive device. Handled improperly or without adequate safeguards, it can be accidentally activated and cause serious personal injury. To guard against personal injury or airbag system failure, only trained Volkswagen Service technicians should test, disassemble or service the airbag system.



## Cautions & Warnings

- Do not quick-charge the battery (for boost starting) for longer than one minute, and do not exceed 16.5 volts at the battery with the boosting cables attached. Wait at least one minute before boosting the battery a second time.
- Never use a test light to conduct electrical tests of the airbag system. The system must only be tested by trained Volkswagen Service technicians using the VAG 1551 Scan Tool (ST) or an approved equivalent. The airbag unit must never be electrically tested while it is not installed in the vehicle.
- Some aerosol tire inflators are highly flammable. Be extremely cautious when repairing a tire that may have been inflated using an aerosol tire inflator. Keep sparks, open flame or other sources of ignition away from the tire repair area. Inflate and deflate the tire at least four times before breaking the bead from the rim. Completely remove the tire from the rim before attempting any repair.
- When driving or riding in an airbag-equipped vehicle, never hold test equipment in your hands or lap while the vehicle is in motion. Objects between you and the airbag can increase the risk of injury in an accident.

**I have read and I understand these Cautions and Warnings.**

