	Option Code	Accessory	Application	Publication No. V 1.1
	JAA	A6 Jetta Vehicle Alarm Kit 5C6-998-003	2011 + Jetta	Installation Level L3
	Installation Instructions			Issue Date March 23,2011



CAUTION:

Read entire instructions thoroughly before starting

Improper installation procedures can cause serious personal injury.

- Installation should be performed only by a qualified technician.
 - Read all instructions thoroughly before starting.
 - Observe all safety precautions when working under a vehicle.
 - Beware of sharp edges.
 - Always wear safety glasses to help protect eyes.
 - Always wear protective gear as gloves and use caution when using hand tools. Read entire instructions thoroughly before starting.
 - Before starting make sure painted and trim surfaces are clean of any debris. Use an alcohol based cleaning solution to clean the application areas of the vehicle if needed. Make sure painted surfaces are protected to avoid scratching during installation process of the items. Use proper surface protection covers and work attire free of dirt and grease.
 - If you find parts that are out of shape, have paint imperfections or not acceptable, put them aside in a clean organized manner so they can be returned to suppliers.
 - Report these parts Weekly. Call in any missing hardware. Extra parts will be shipped to you.
- DO NOT LET THIS STOCK SIT IDLE



ATTENTION:

During the installation process, close all doors, and remove the keys from the ignition. If you must open a door, trunk lid, etc., during the installation process, close the areas as soon as you are complete with the application in that area. Failure to do so could result in significant battery drain, and/or battery failure in the vehicle.



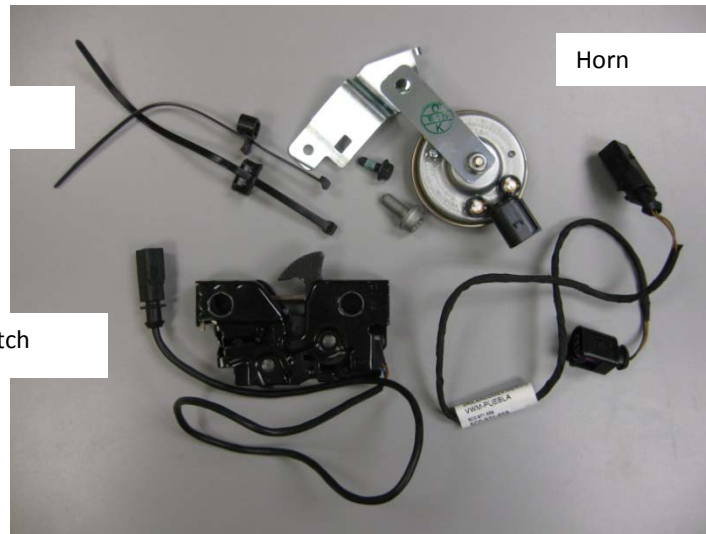
Kit Contents:

Horn Cable Ties

Hood Latch

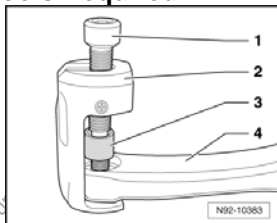
Horn

Horn Cable



Alarm Kit P/N: 5C6-998-003

Tools Required:



T10369/1 Wiper Puller



Ratchet



T20/T25 Torx Bit



5051B



10mm combination wrench



Torque Wrench

Icon Legend:



Note – special directives/notations within the procedure, designed to assist.



Attentions Warnings – Pay special attention to the notations. Failure to, could result in damage to the part(s) or vehicle.



VW Quality Check – Confirm that the step has been completed and all quality standards have been met.



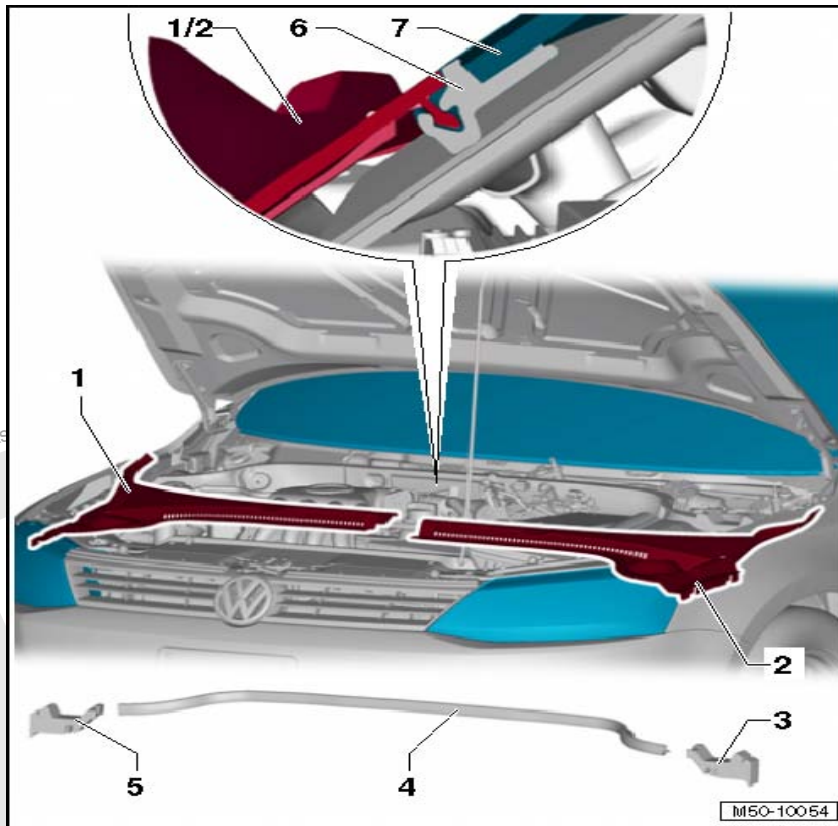
Tip – a comment that may help the installer navigate certain steps within a procedure.



Cautions - Failure to following the cautions could result in damage to the part, vehicle or person.



Installation of Horn in the Plenum Chamber



1.1

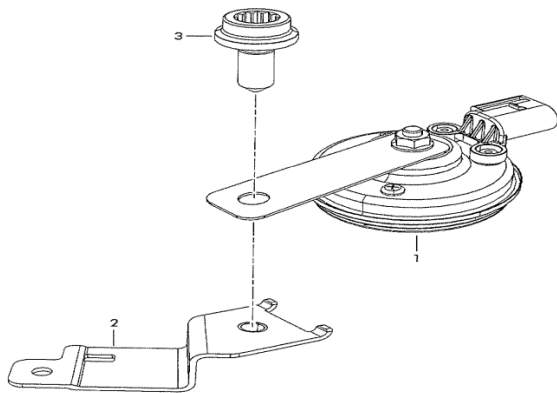
Access to plenum chamber:

- Remove the wiper arms with wiper puller T10369/1
- Remove seal (4) from the plenum chamber covers (1) and (2)
- Lift off the plenum chamber covers (1) and (2), starting at the edge of the windshield using your hands. Work your hands along the windshield and then along the sides to the retainer (6)
- Remove the driver side plenum cover forward and then away from the car
- Remove the bracket that holds the lines for the spray nozzles from the passenger side plenum cover (1)
- Then remove the passenger chamber cover forward and then away from the car



Caution

Do not use a screwdriver, a wedge or any other prying tool to pry off the plenum chamber covers - 1- and -2-. This could damage the windshield, which could later crack.



- 1.2
Assemble the alarm and alarm bracket.



Attention

Tighten the threaded connection to 10 Nm.



- 1.3
Attach the alarm horn harness to the horn, and attach horn assembly to the bracket in the center of the plenum.



Attention

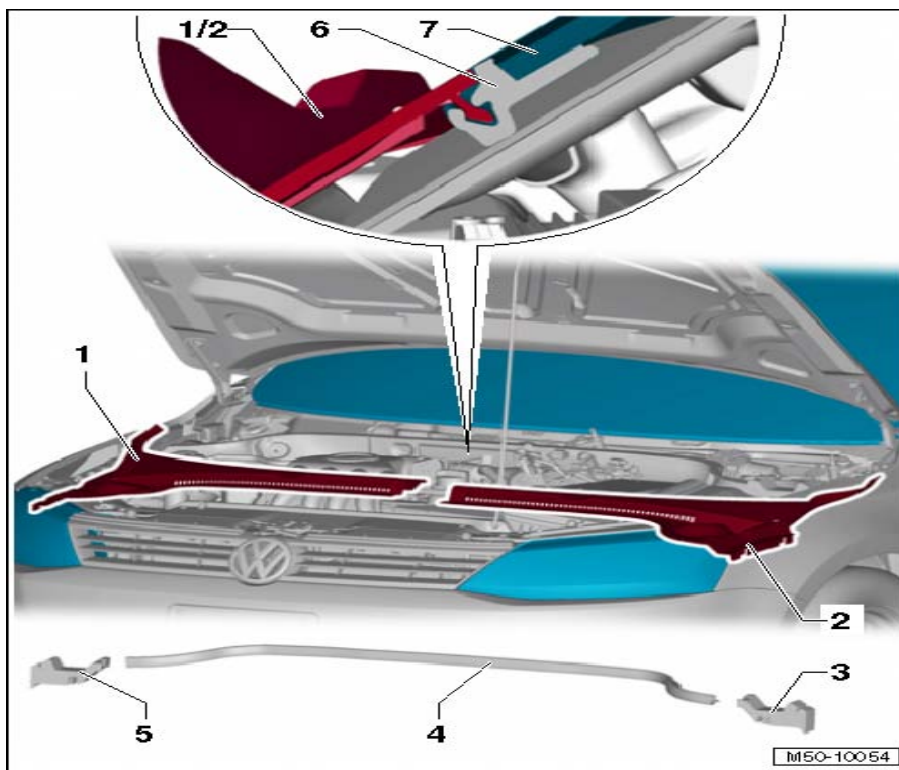
Tighten the threaded connection to 10 Nm.



- 1.4
Route the horn harness underneath the wiper assembly and attach the horn harness to the loose connector near the wiper motor.



- 1.5
Secure the horn alarm harness to the plenum using plastic straps included in the kit.



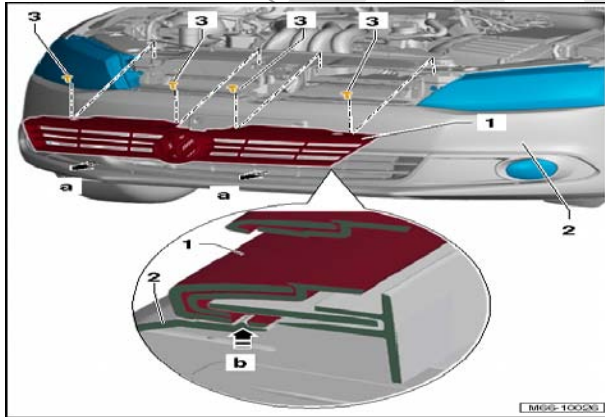
1.6

Reassemble the plenum cover:

- Spray the retainer (6) with soapy water to make it easier to install the plenum chamber covers
- Insert the flange of the right plenum chamber cover (1) between the windshield and the fender
- Make sure the clip on the right plenum chamber cover (1) fits correctly into the top of the cross member
- Position the right plenum chamber cover (1) on the retainer (6) and then, starting in the middle, press it into the retainer (6)
- Remove the bracket that holds the lines for the spray nozzle from the right plenum chamber cover (1)
- Insert the flange on the left plenum chamber cover (2) between the windshield and the fender
- Make sure the clip on the left plenum cover (2) fits correctly into the top of the cross member
- Position the left plenum chamber cover (2) on the retainer (6), and then starting in the middle, press it into the retainer (6)
- Install the seal (3) and the wiper arms



Installation of Hood Latch



- 1.7
Remove the four bolts holding the grille in place, and pull it straight out from the car.



- 1.8
Disconnect the hood release bowden cable.



- 1.9
Remove the two bolts holding the hood latch in place. Remove the hood latch and disconnect the hood release cable.



- 1.10
Install the new hood latch that is equipped with an alarm switch and run the hood-lock harness inside the frame by the radiator.



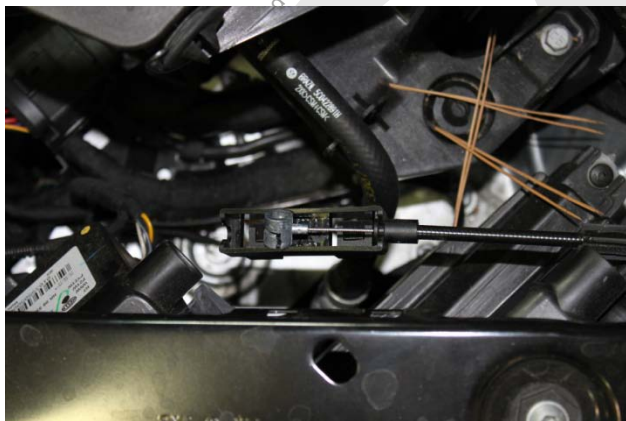
1.11

Use a piece of mechanic's wire to draw the hood-lock harness through the opening next to the radiator and into the engine compartment.



1.12

Locate the vehicle hood-lock harness connector. It has a dummy plug attached to it, and is in the area below the power steering reservoir. Attach the hood-lock harness and place the connector in the clip located on the radiator support.

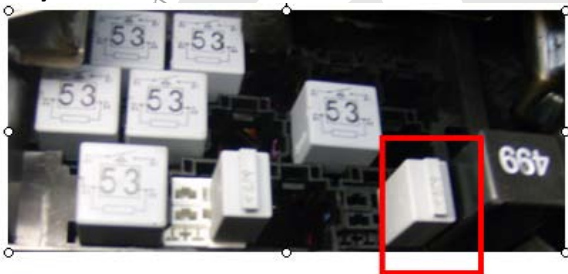


1.13

Reconnect the hood bowden cable.



Relay Position



1.14

Make sure the Alarm Horn Relay is in Position 14 of the relay carrier on the vehicle Electrical System Control Module (alarm horn relay will most likely will be in this position)

Adaptation

1.15

The Body Control Module (BCM) must be updated. Your 5051B must have software from Volkswagen CD v.18.06.00. The standby voltage of the vehicle must be 12.5V minimum during the update. Connect an external source of power to the vehicle battery.



Note:

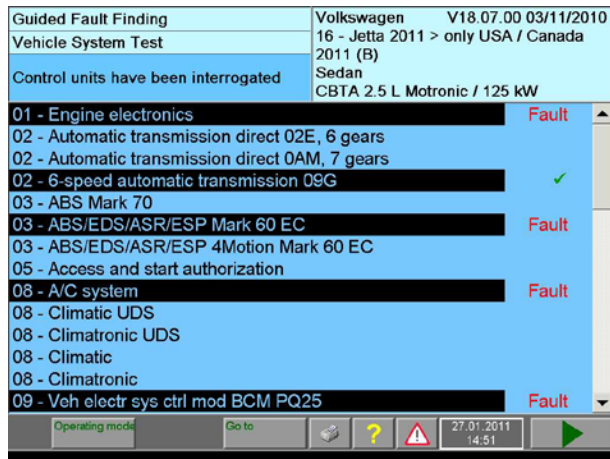
Make sure no sources of electromagnetic radiation is present (phones or other wireless devices) in the vehicle or its immediate vicinity during the update.

1.16

Connect the VAS-5051B to the vehicle diagnostic OBD port and turn the ignition on. Make sure that the diagnostic tool is online.

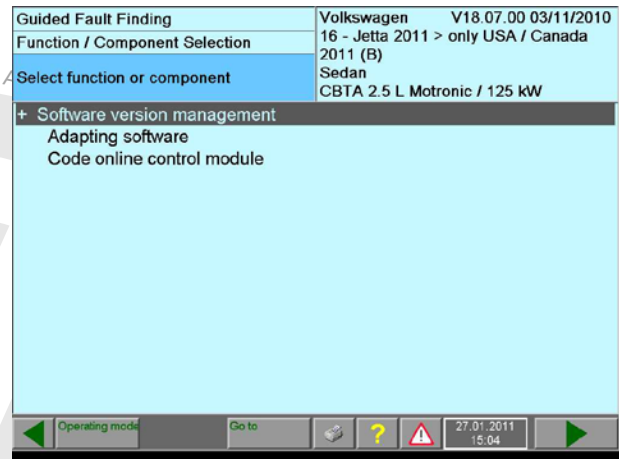
1.17

Select Guided Fault Finding and identify the vehicle.



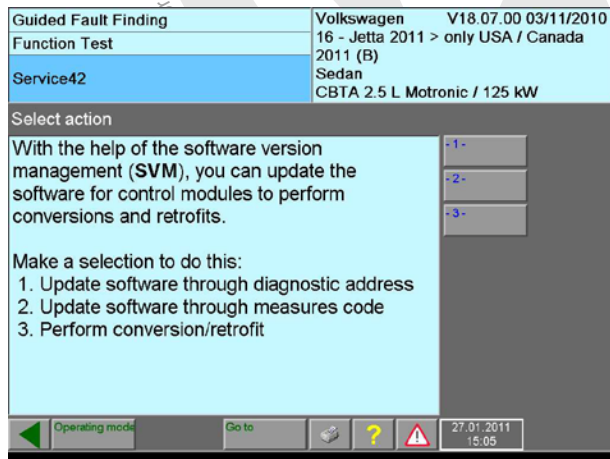
1.18

Start the vehicle test system with the forward button and press the Function/Component selection button.



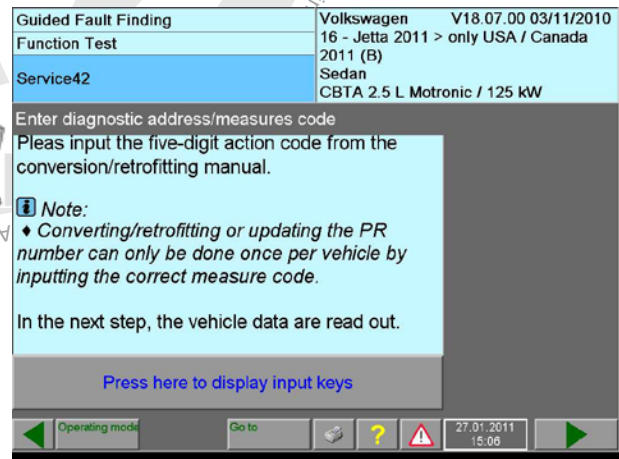
1.19

Select software version management (SVM) button and then select Adapting Software. Start the program with the forward button. Follow the instructions on screen.



1.20

The equipment conversion takes place through the Function Test. Select 3: Perform conversion/retrofit.

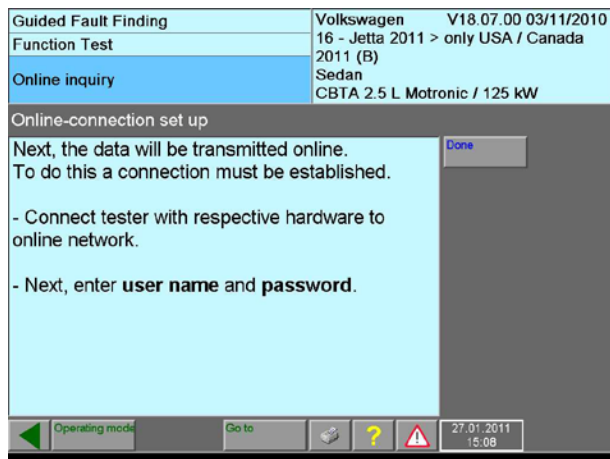


1.21

You will be asked to input the five-digit code from the conversion/retrofitting manual. Activate the keyboard and enter the action code: 3370E.

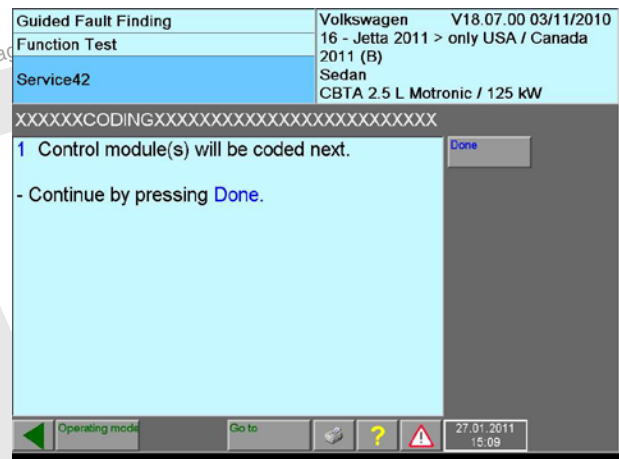
Confirm your entry with "Q".

Follow the instructions on the screen.



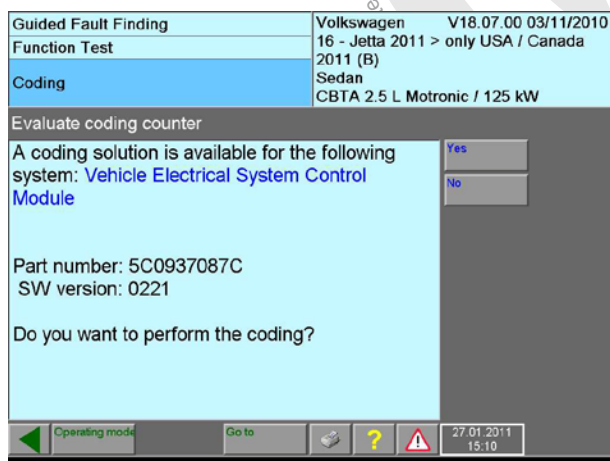
1.22

The 5051B will remind you that the tester must be on-line. You will then need to enter your user name and password to continue.



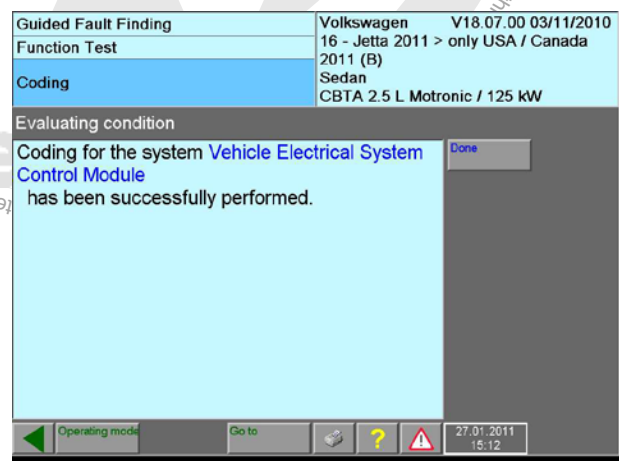
1.23

After accepting the user name and password, the tester will ask if you want to code the control module. Press Done.



1.24

The 5051B identifies the part number of the Electrical System Control Module and identifies the software version. It asks if you want to perform the coding. Press Yes.



1.25

After the coding has been completed, exit Guided Fault Finding mode. The fault memory will be automatically erased.

1.26

Disconnect the tester. Put the driver's window down, remove the key and then lock the door using the key fob to set the alarm. Open the door using the inside door handle. The alarm will sound. Put the key into the ignition to turn off the alarm.

Cautions & Warnings

Please read these WARNINGS and CAUTIONS before proceeding with maintenance and repair work. You must answer that you have read and you understand these WARNINGS and CAUTIONS before you will be allowed to view this information.

- If you lack the skills, tools and equipment, or a suitable workshop for any procedure described in this manual, we suggest you leave such repairs to an authorized Volkswagen retailer or other qualified shop. We especially urge you to consult an authorized Volkswagen retailer before beginning repairs on any vehicle that may still be covered wholly or in part by any of the extensive warranties issued by Volkswagen.
- Disconnect the battery negative terminal (ground strap) whenever you work on the fuel system or the electrical system. Do not smoke or work near heaters or other fire hazards. Keep an approved fire extinguisher handy.
- Volkswagen is constantly improving its vehicles and sometimes these changes, both in parts and specifications, are made applicable to earlier models. Therefore, part numbers listed in this manual are for reference only. Always check with your authorized Volkswagen retailer parts department for the latest information.
- Any time the battery has been disconnected on an automatic transmission vehicle, it will be necessary to reestablish Transmission Control Module (TCM) basic settings using the VAG 1551 Scan Tool (ST).
- Never work under a lifted vehicle unless it is solidly supported on stands designed for the purpose. Do not support a vehicle on cinder blocks, hollow tiles or other props that may crumble under continuous load. Never work under a vehicle that is supported solely by a jack. Never work under the vehicle while the engine is running.
- For vehicles equipped with an anti-theft radio, be sure of the correct radio activation code before disconnecting the battery or removing the radio. If the wrong code is entered when the power is restored, the radio may lock up and become inoperable, even if the correct code is used in a later attempt.
- If you are going to work under a vehicle on the ground, make sure that the ground is level. Block the wheels to keep the vehicle from rolling. Disconnect the battery negative terminal (ground strap) to prevent others from starting the vehicle while you are under it.
- Do not attempt to work on your vehicle if you do not feel well. You increase the danger of injury to yourself and others if you are tired, upset or have taken medicine or any other substances that may impair you or keep you from being fully alert.
- Never run the engine unless the work area is well ventilated. Carbon monoxide (CO) kills.
- Always observe good workshop practices. Wear goggles when you operate machine tools or work with acid. Wear goggles, gloves and other protective clothing whenever the job requires working with harmful substances.
- Tie long hair behind your head. Do not wear a necktie, a scarf, loose clothing, or a necklace when you work near machine tools or running engines. If your hair, clothing, or jewelry were to get caught in the machinery, severe injury could result.
- Do not re-use any fasteners that are worn or deformed in normal use. Some fasteners are designed to be used only once and are unreliable and may fail if used a second time. This includes, but is not limited to, nuts, bolts, washers, circlips and cotter pins. Always follow the recommendations in this manual - replace these fasteners with new parts where indicated, and any other time it is deemed necessary by inspection.

Cautions & Warnings

- Illuminate the work area adequately but safely. Use a portable safety light for working inside or under the vehicle. Make sure the bulb is enclosed by a wire cage. The hot filament of an accidentally broken bulb can ignite spilled fuel or oil.
- Friction materials such as brake pads and clutch discs may contain asbestos fibers. Do not create dust by grinding, sanding, or by cleaning with compressed air. Avoid breathing asbestos fibers and asbestos dust. Breathing asbestos can cause serious diseases such as asbestosis or cancer, and may result in death.
- Finger rings should be removed so that they cannot cause electrical shorts, get caught in running machinery, or be crushed by heavy parts.
- Before starting a job, make certain that you have all the necessary tools and parts on hand. Read all the instructions thoroughly; do not attempt shortcuts. Use tools that are appropriate to the work and use only replacement parts meeting Volkswagen specifications. Makeshift tools, parts and procedures will not make good repairs.
- Catch draining fuel, oil or brake fluid in suitable containers. Do not use empty food or beverage containers that might mislead someone into drinking from them. Store flammable fluids away from fire hazards. Wipe up spills at once, but do not store the oily rags, which can ignite and burn spontaneously.
- Use pneumatic and electric tools only to loosen threaded parts and fasteners. Never use these tools to tighten fasteners, especially on light alloy parts. Always use a torque wrench to tighten fasteners to the tightening torque listed.
- Keep sparks, lighted matches, and open flame away from the top of the battery. If escaping hydrogen gas is ignited, it will ignite gas trapped in the cells and cause the battery to explode.
- Be mindful of the environment and ecology. Before you drain the crankcase, find out the proper way to dispose of the oil. Do not pour oil onto the ground, down a drain, or into a stream, pond, or lake. Consult local ordinances that govern the disposal of wastes.
- The air-conditioning (A/C) system is filled with a chemical refrigerant that is hazardous. The A/C system should be serviced only by trained automotive service technicians using approved refrigerant recovery/recycling equipment, trained in related safety precautions, and familiar with regulations governing the discharging and disposal of automotive chemical refrigerants.
- Before doing any electrical welding on vehicles equipped with anti-lock brakes (ABS), disconnect the battery negative terminal (ground strap) and the ABS control module connector.
- Do not expose any part of the A/C system to high temperatures such as open flame. Excessive heat will increase system pressure and may cause the system to burst.
- When boost-charging the battery, first remove the fuses for the Engine Control Module (ECM), the Transmission Control Module (TCM), the ABS control module, and the trip computer. In cases where one or more of these components is not separately fused, disconnect the control module connector(s).
- Some of the vehicles covered by this manual are equipped with a supplemental restraint system (SRS), that automatically deploys an airbag in the event of a frontal impact. The airbag is operated by an explosive device. Handled improperly or without adequate safeguards, it can be accidentally activated and cause serious personal injury. To guard against personal injury or airbag system failure, only trained Volkswagen Service technicians should test, disassemble or service the airbag system.

Cautions & Warnings

- Do not quick-charge the battery (for boost starting) for longer than one minute, and do not exceed 16.5 volts at the battery with the boosting cables attached. Wait at least one minute before boosting the battery a second time.
- Never use a test light to conduct electrical tests of the airbag system. The system must only be tested by trained Volkswagen Service technicians using the VAG 1551 Scan Tool (ST) or an approved equivalent. The airbag unit must never be electrically tested while it is not installed in the vehicle.
- Some aerosol tire inflators are highly flammable. Be extremely cautious when repairing a tire that may have been inflated using an aerosol tire inflator. Keep sparks, open flame or other sources of ignition away from the tire repair area. Inflate and deflate the tire at least four times before breaking the bead from the rim. Completely remove the tire from the rim before attempting any repair.
- When driving or riding in an airbag-equipped vehicle, never hold test equipment in your hands or lap while the vehicle is in motion. Objects between you and the airbag can increase the risk of injury in an accident.

I have read and I understand these Cautions and Warnings.

