

Service Information

Workshop Equipment

Number: Indie-6150Rec

Subject: VAS 6150 Class Laptops - System Recovery Instructions

Date: Jan. 06, 2012

1.0 - Introduction

Due to their function as diagnostic tools, VAS diagnostic laptops are equipped with a proprietary Windows XP® operating system. A partitioned hard drive is utilized and the system is specially configured to support the installation and licensing requirements of the VAS-PC Diagnostic Software.

In the event of operating system malfunctions, system recovery must be performed using data stored on the partitioned hard drive. Unlike VAS 505X devices, a separate "Recovery DVD" is not used. The latest versions of VAS-PC Base and Brand software must be reinstalled and configured after successful system recovery.

These instructions were validated using US/CDN market devices and software. The various operating manuals included on the VAS-PC Base CD may contain information that is not applicable to the US/CDN market. For system recovery and software loading, the instructions provided in this document take precedent.

Should you experience difficulties with, or need clarification on, any of the instructions found here, contact **VWGoA Diagnostic Tester Software Support at 1-888-896-1298.**

ATTENTION!

- **DO NOT USE the Panasonic Windows XP® Installation CDs supplied with the diagnostic laptop for operating system recovery!** Use of the Panasonic CDs will completely erase all VAS-specific partition data and install a standard Windows XP® or Windows 7® laptop operating system. Subsequent installation and function of the VAS-PC application is not possible on a standard laptop installation.
- During the recovery process described here, all data on hard drive C:\ is erased. Only data on hard drive D:\ is retained. If possible, finalize all stored diagnostic sessions and transmit all saved diagnostic protocols prior to recovery.

Notes:

- *This procedure should be performed by an experienced user or IT professional.*
- *Please read this entire document before performing system recovery.*
- *Heed all prerequisite requirements and notes, and follow all instruction steps (including instruction steps cross-referenced in other documents posted on erWin).*
- *Perform this procedure in an area that is quiet, clean and without distraction or interruption.*
- *We recommended a printed copy of these instructions be used during the recovery process.*
- *Allow approximately 2 hours to complete the recovery and software reinstallation procedure.*
- *Perform this procedure with the diagnostic laptop power supply adapter cable plugged in.*
- *During system recovery and subsequent rebooting, the diagnostic laptop must not be connected to the docking station.*

Service Information

2.0 - General Information

This document contains step-by-step instructions required to perform **system recovery** on all current **VAS 6150 Class laptops** and **network configuration ONLY**.

This document **does not** contain detailed VAS-PC Base & Brand software installation and configuration instructions needed to put the device back into service. **These step-by-step instructions are located in various existing documents posted on erWin.**

Sections 5.0 & 6.0 in this document contain cross-references to all applicable software installation and configuration information in various documents **posted on erWin**. Obtain these documents separately and follow the instructions as specified.

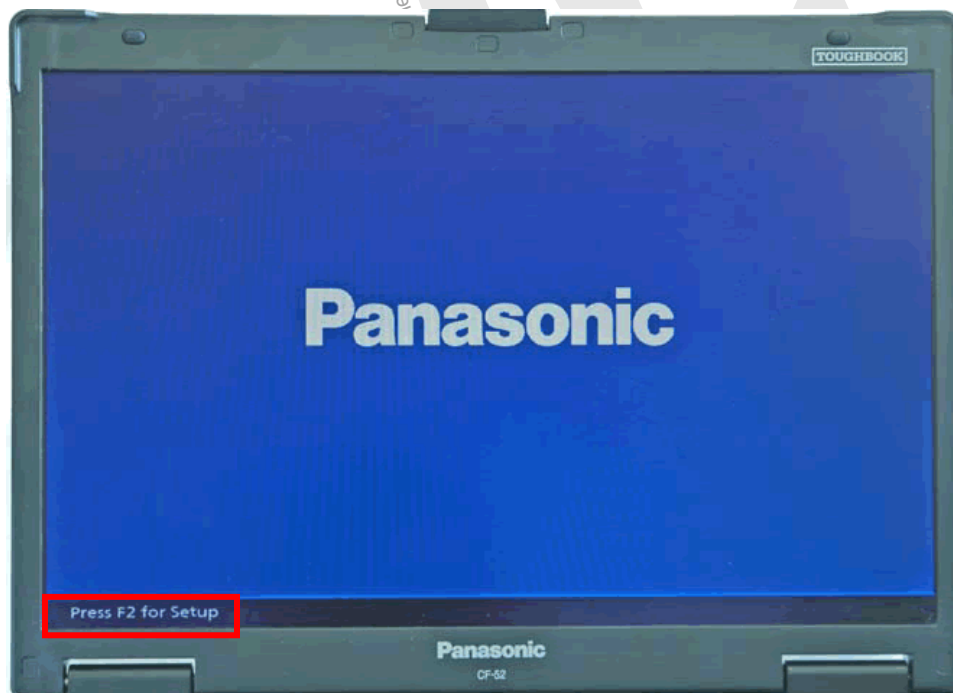
3.0 - System Recovery

The system recovery process is initiated through the system BIOS. To enter the BIOS Setup, press the F2 key on startup when the Panasonic logo is displayed.

Preparation:

- Connect power adapter (do not attempt recovery on battery power alone).
- If an Ethernet (network) cable is connected, **disconnect** it.

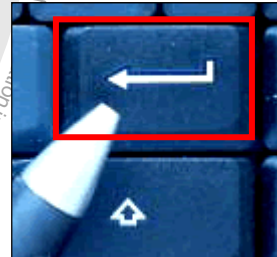
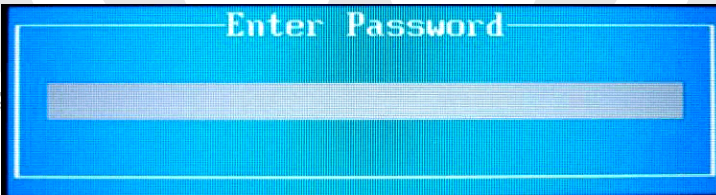
1. Turn on the diagnostic laptop.
2. When the Panasonic logo is displayed, press the **F2** key to enter the BIOS Setup.



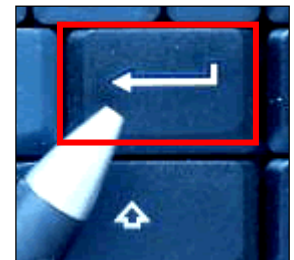
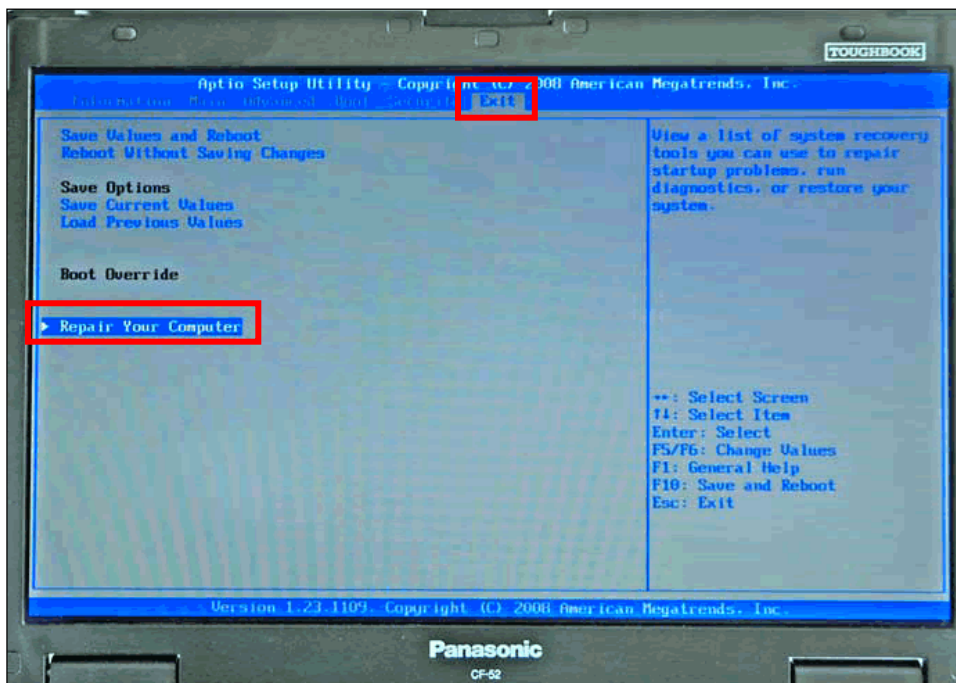
Service Information

A BIOS password prompt appears:

3. For **VAS 6150** and **VAS 6150A** models, enter BIOS password: **vas6150**
4. For **VAS 6150B** models, enter BIOS password: **vas6150b**
5. Press the **Enter** key.



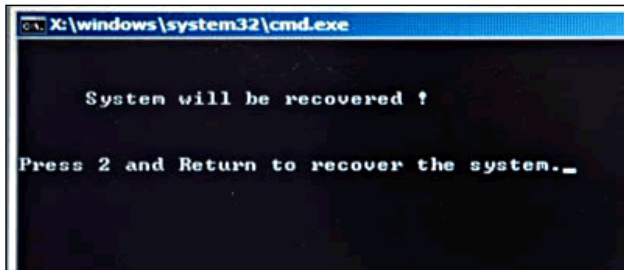
6. In the BIOS menu, use the right and left arrow keys to select the **Exit** tab, then use the up and down arrow keys to select **Repair Your Computer**. Press the **Enter** key to continue.



Continued... 4/

Service Information

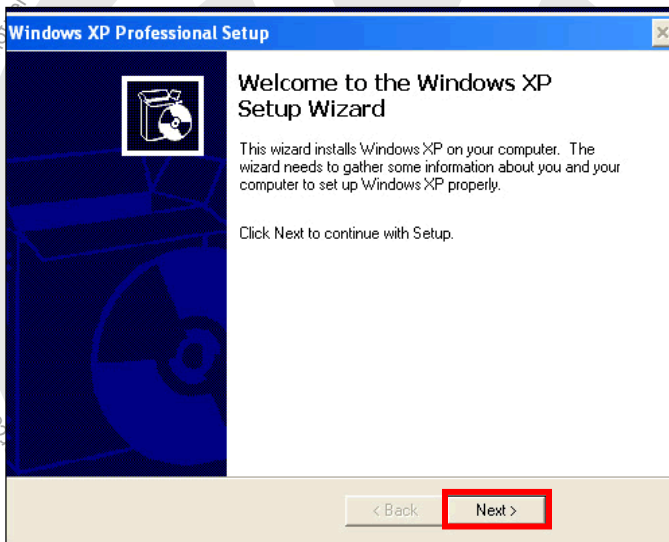
- After the Enter key is pressed, the system recovery starts. After approximately 2 minutes, the message **"System will be recovered"** is displayed.



- Press the **"2"** key as instructed, then press **Enter** to continue.



- Recovery will take between 10 and 15 minutes. When complete, the system will reboot.
- After the system reboots, the Windows XP Setup Wizard is displayed. Click **Next** to continue.



- Review the Regional and Language options. Make changes as necessary, ensuring that **English [United States] (EN)** is set as default. The click **Next**.
- Review the **Date, Time, Time Zone** and **Daylight Savings Time** settings. Make changes if necessary. Then click **Next**.
- When the installation is complete, the system will reboot and the Windows desktop will be displayed.

Service Information

4.0 – Network Configuration & Netviewer

4.1 – Network Configuration

For dealership networks using **DHCP** for Internet access, no configuration is necessary (default setting in VAS 5051B is DHCP). Proceed with Netviewer installation below.

For dealership networks uses **Static IP** configurations for Internet access, the configurations must be renewed after installation/recovery. Ask your workshop IT professional for details and assistance.

If you are unsure of the type of network configuration used, ask your workshop IT professional, or contact the **VWGoA IT Service Desk** at **1-866-892-3375** for assistance.

4.2 – Netviewer Installation

Prerequisite:

Diagnostic laptop is able to connect to internet (DHCP, or static IPs enabled as per Section 4.1).

1. Connect network/Ethernet cable to tester.
2. Launch Internet Explorer and logon to your desired brand erWin website.
3. From the home page, navigate as follows: **About ErWin > Step By Step > Step 1: Set up erWin.**
4. From the **VAS Scan tool support software** category, double click the **Netviewer Download (free)** link.
5. Save file to Windows desktop on the laptop.
6. When the file download is complete select “**Close**” from the dialog box.
7. **Restart** the laptop (**Start > Turn Off-Computer > Restart**)

5.0 – Reinstall and Configure Software

5.1 – Install and Configure VAS-PC Base and Brand Software

1. Using a workshop PC or laptop connected to a printer, logon to your desired brand **erWin website**.
2. Navigate through **Search > Manual Search > Category 1 - Special Tools Information (free)** and locate/print **Service Information** document title: **VAS 5051B, VAS 5052A & VAS 6150 Class Laptops - Base V19.01.00 Installation Instructions.**
3. Perform Base and Brand software installation and configuration as specified in the following sections:
 - **3.1 - Install Base Software V19.01.00**
 - **4.0 - Configure Base Software (incl. all subsections)**
 - **5.0 - Install Brand Disc(s)**

5.2 – Reinstall Anti-Virus Software (where applicable)

1. Reinstall anti-virus software as per your workshop's IT policy where applicable.

Service Information

6.0 – Renew VAS 5054A Transmitter Head Bluetooth & EDIC Configurations

6.1 – VAS 5054A Bluetooth and EDIC (wireless) Configurations

1. Using a workshop PC or laptop connected to a printer, logon to your desired brand **erWin website**.
2. Navigate through **Search > Manual Search > Category 1 - Special Tools Information (free)** and locate/print **Service Information** document title: **VAS 5054A Transmitter Head - Bluetooth & EDIC Configuration**.
3. Perform all configuration steps as specified.

6.2 – VAS 5054A USB (cabled) Configuration

If the laptop is used to perform anti-theft immobilizer adaptations, a USB (cabled) connection must be used between the VAS 5054A Transmitter Head and the laptop.

If the USB (cabled) configuration was originally performed during initial setup of the laptop when new, the USB configuration must be renewed after system recovery.

1. Using a workshop PC or laptop connected to a printer, logon to your desired brand **erWin website**.
2. Navigate through **Search > Manual Search > Category 1 - Special Tools Information (free)** and locate/print **Service Information** document title: **VAS 5054A Transmitter Head - USB Configuration & Function**.
3. Perform all configuration steps as specified.



Cautions & Warnings

Please read these WARNINGS and CAUTIONS before proceeding with maintenance and repair work. You must answer that you have read and you understand these WARNINGS and CAUTIONS before you will be allowed to view this information.

- If you lack the skills, tools and equipment, or a suitable workshop for any procedure described in this manual, we suggest you leave such repairs to an authorized Volkswagen retailer or other qualified shop. We especially urge you to consult an authorized Volkswagen retailer before beginning repairs on any vehicle that may still be covered wholly or in part by any of the extensive warranties issued by Volkswagen.
- Disconnect the battery negative terminal (ground strap) whenever you work on the fuel system or the electrical system. Do not smoke or work near heaters or other fire hazards. Keep an approved fire extinguisher handy.
- Volkswagen is constantly improving its vehicles and sometimes these changes, both in parts and specifications, are made applicable to earlier models. Therefore, part numbers listed in this manual are for reference only. Always check with your authorized Volkswagen retailer parts department for the latest information.
- Any time the battery has been disconnected on an automatic transmission vehicle, it will be necessary to reestablish Transmission Control Module (TCM) basic settings using the VAG 1551 Scan Tool (ST).
- Never work under a lifted vehicle unless it is solidly supported on stands designed for the purpose. Do not support a vehicle on cinder blocks, hollow tiles or other props that may crumble under continuous load. Never work under a vehicle that is supported solely by a jack. Never work under the vehicle while the engine is running.
- For vehicles equipped with an anti-theft radio, be sure of the correct radio activation code before disconnecting the battery or removing the radio. If the wrong code is entered when the power is restored, the radio may lock up and become inoperable, even if the correct code is used in a later attempt.
- If you are going to work under a vehicle on the ground, make sure that the ground is level. Block the wheels to keep the vehicle from rolling. Disconnect the battery negative terminal (ground strap) to prevent others from starting the vehicle while you are under it.
- Do not attempt to work on your vehicle if you do not feel well. You increase the danger of injury to yourself and others if you are tired, upset or have taken medicine or any other substances that may impair you or keep you from being fully alert.
- Never run the engine unless the work area is well ventilated. Carbon monoxide (CO) kills.
- Always observe good workshop practices. Wear goggles when you operate machine tools or work with acid. Wear goggles, gloves and other protective clothing whenever the job requires working with harmful substances.
- Tie long hair behind your head. Do not wear a necktie, a scarf, loose clothing, or a necklace when you work near machine tools or running engines. If your hair, clothing, or jewelry were to get caught in the machinery, severe injury could result.
- Do not re-use any fasteners that are worn or deformed in normal use. Some fasteners are designed to be used only once and are unreliable and may fail if used a second time. This includes, but is not limited to, nuts, bolts, washers, circlips and cotter pins. Always follow the recommendations in this manual - replace these fasteners with new parts where indicated, and any other time it is deemed necessary by inspection.

Cautions & Warnings

- Illuminate the work area adequately but safely. Use a portable safety light for working inside or under the vehicle. Make sure the bulb is enclosed by a wire cage. The hot filament of an accidentally broken bulb can ignite spilled fuel or oil.
- Friction materials such as brake pads and clutch discs may contain asbestos fibers. Do not create dust by grinding, sanding, or by cleaning with compressed air. Avoid breathing asbestos fibers and asbestos dust. Breathing asbestos can cause serious diseases such as asbestosis or cancer, and may result in death.
- Finger rings should be removed so that they cannot cause electrical shorts, get caught in running machinery, or be crushed by heavy parts.
- Before starting a job, make certain that you have all the necessary tools and parts on hand. Read all the instructions thoroughly; do not attempt shortcuts. Use tools that are appropriate to the work and use only replacement parts meeting Volkswagen specifications. Makeshift tools, parts and procedures will not make good repairs.
- Catch draining fuel, oil or brake fluid in suitable containers. Do not use empty food or beverage containers that might mislead someone into drinking from them. Store flammable fluids away from fire hazards. Wipe up spills at once, but do not store the oily rags, which can ignite and burn spontaneously.
- Use pneumatic and electric tools only to loosen threaded parts and fasteners. Never use these tools to tighten fasteners, especially on light alloy parts. Always use a torque wrench to tighten fasteners to the tightening torque listed.
- Keep sparks, lighted matches, and open flame away from the top of the battery. If escaping hydrogen gas is ignited, it will ignite gas trapped in the cells and cause the battery to explode.
- Be mindful of the environment and ecology. Before you drain the crankcase, find out the proper way to dispose of the oil. Do not pour oil onto the ground, down a drain, or into a stream, pond, or lake. Consult local ordinances that govern the disposal of wastes.
- The air-conditioning (A/C) system is filled with a chemical refrigerant that is hazardous. The A/C system should be serviced only by trained automotive service technicians using approved refrigerant recovery/recycling equipment, trained in related safety precautions, and familiar with regulations governing the discharging and disposal of automotive chemical refrigerants.
- Before doing any electrical welding on vehicles equipped with anti-lock brakes (ABS), disconnect the battery negative terminal (ground strap) and the ABS control module connector.
- Do not expose any part of the A/C system to high temperatures such as open flame. Excessive heat will increase system pressure and may cause the system to burst.
- When boost-charging the battery, first remove the fuses for the Engine Control Module (ECM), the Transmission Control Module (TCM), the ABS control module, and the trip computer. In cases where one or more of these components is not separately fused, disconnect the control module connector(s).
- Some of the vehicles covered by this manual are equipped with a supplemental restraint system (SRS), that automatically deploys an airbag in the event of a frontal impact. The airbag is operated by an explosive device. Handled improperly or without adequate safeguards, it can be accidentally activated and cause serious personal injury. To guard against personal injury or airbag system failure, only trained Volkswagen Service technicians should test, disassemble or service the airbag system.

Cautions & Warnings

- Do not quick-charge the battery (for boost starting) for longer than one minute, and do not exceed 16.5 volts at the battery with the boosting cables attached. Wait at least one minute before boosting the battery a second time.
- Never use a test light to conduct electrical tests of the airbag system. The system must only be tested by trained Volkswagen Service technicians using the VAG 1551 Scan Tool (ST) or an approved equivalent. The airbag unit must never be electrically tested while it is not installed in the vehicle.
- Some aerosol tire inflators are highly flammable. Be extremely cautious when repairing a tire that may have been inflated using an aerosol tire inflator. Keep sparks, open flame or other sources of ignition away from the tire repair area. Inflate and deflate the tire at least four times before breaking the bead from the rim. Completely remove the tire from the rim before attempting any repair.
- When driving or riding in an airbag-equipped vehicle, never hold test equipment in your hands or lap while the vehicle is in motion. Objects between you and the airbag can increase the risk of injury in an accident.

I have read and I understand these Cautions and Warnings.