

VAS for PCs – Immobilizer Quick Reference & FAQs

1 VAS for PC Overview

The Anti-theft Immobilizer system on Audi, Bentley, Lamborghini and Volkswagen vehicles, prevents the engine from being started by unauthorized means. Some vehicle electrical system control modules that monitor or control engine emissions modules are integrated with the Anti-theft Immobilizer systems. Therefore, emissions modules that are replaced must be adapted to the immobilizer system to successfully start the engine after repair.

1.1 Minimum System Requirements

PC:

CPU	1.7 GHz
RAM	1 GB
Graphics	1024x768
Hard Disk	10 GB Available
USB:	USB connection for Pass Thru-Box
LAN:	100 Mb Broadband

Diagnostic:

J 2543-1 Pass Thru device
Battery Charger connected to vehicle during adaption

Warning! VAS adaption drains car batteries very quickly. If the battery charge depletes before adaption finishes, permanent damage to modules integrated with the immobilizer system could occur.

1.2 Adaption Check List

Ensure your VAS for PC software is ready

- √ You have enrolled into the program by contacting arvato at (800) 544-8021 or email vwgoa@arvatousa.com
- √ You have received 3 emails from VWGoA that contain a Network Security ID and Password and a certificate file
- √ You have installed the certificate onto your PC (e.g. IndepeDeale.30001.300999.pfx)
- √ You have a tested J 2534-1 Pass Thru device
- √ You have JVM 1.4.2_15 installed on your PC (for updates, see <http://www.java.com>)
- √ You have downloaded and installed the VAS for PC base and brand software available beneath the Reprogramming menu on the following erWIN sites:
<https://erwin.audiusa.com/erwin/showHome.do> and <https://erwin.vw.com/erwin/showHome.do>.

All authorized vehicle keys **must be available**

- √ For security reasons, the immobilizer adaptation process requires renewed adaptation of all vehicle keys.
- √ Ensure all vehicle keys are on-hand prior to starting the adaptation process.
- √ Should all keys not be available, inform customer that the remaining keys will not function.
- √ Only authorized keys that are compatible with the Immobilizer system, and initially coded to the Vehicle Identification Number (VIN) if applicable, must be used.
- √ Repeated attempts to adapt unauthorized keys to the immobilizer system will result in unsuccessful adaptation and potential shut down of certain CAN-Bus modules.



No Diagnostic Trouble Codes (DTC) Can be Present

- √ Prior to adaptation, scan all vehicle systems for DTCs using a Generic Scan Tool.
- √ Should DTCs be present, troubleshoot and repair the cause of the DTC and erase the DTC memory prior to immobilizer adaptation.

Maintain Vehicle Battery Voltage

- √ Vehicle battery must be in good condition.
- √ All electrical consumers in the vehicle (other than the ignition) must be switched off.
- √ Use an appropriate battery charger or maintainer to ensure battery voltage is maintained between 12.5 and 14.5 volts during the entire adaptation process.
- √ On models equipped with a Battery Monitoring Control Module, connect battery charger/maintainer negative clamp to the supplied terminal on the Battery Monitoring Control Module (ref. Factory Repair Information, Repair Group 27).
- √ Failure to maintain proper battery voltage during the immobilizer adaptation process will hinder or prevent successful adaptation due to automatic "Low Voltage" shutdown of certain CAN-Bus modules.

1.3 Recommended J 2534-1 Pass Thru devices

Pass thru devices are available for purchase from a recommended Manufacturer for registered workshops to perform Immobilizer functions. The Pass Thru devices that have been tested to work with VAS for PC follow:

- I+ME Pass-Thru+XS (Firmware version 2.07)
Available from <http://www.passthruxs.com> or (734) 266-2083
- DrewTech CarDAQ2534 (Firmware version 1.9.14)
Available from Drew Technologies, Inc.
<http://www.drewtech.com> or (734) 222-5228
- Blue Streak iflash Global Programmer (Firmware version 5.20/2.14)
Available from Blue Streak Electronics
<http://www.bsecorp.com> or (905) 669-4812
Email at Info@bsecorp.com
- Dearborn group VSI-2534 (Firmware version 2.05)
<http://www.dgtech.com> or (248) 488-2080

Note: Currently, Pass Thru re-programming supports SAE J2534-1 version 4.04 only. Please ensure that you have installed the appropriate driver for your Pass Thru device. For details read the documentation shipped with your device or contact the manufacturer.

2 Configure your VAS for PC installation

- Step 1. Double-click the Configurator shortcut  to open the VAS System Configuration module. The following screen displays:

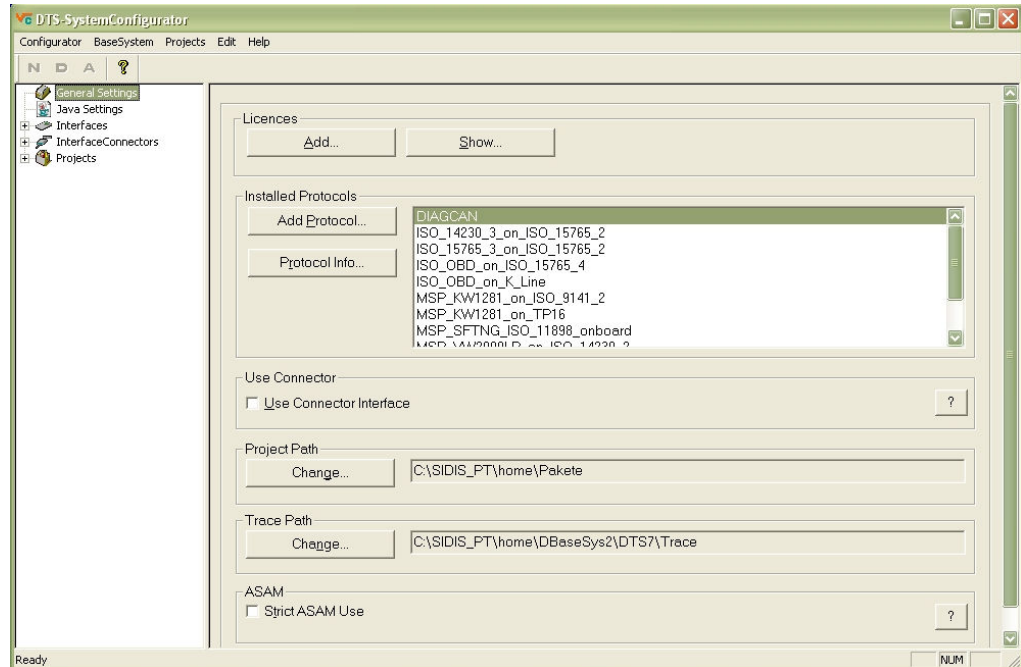


Figure 1 VAS for PC System Configurator

- Step 2. Click the plus sign next to the Interfaces folder, and then select J2534.

- Step 3. Choose the name of the Pass Thru device you plan on using to perform adaptations. The menu is located on the bottom of the Interfaces page as shown below:

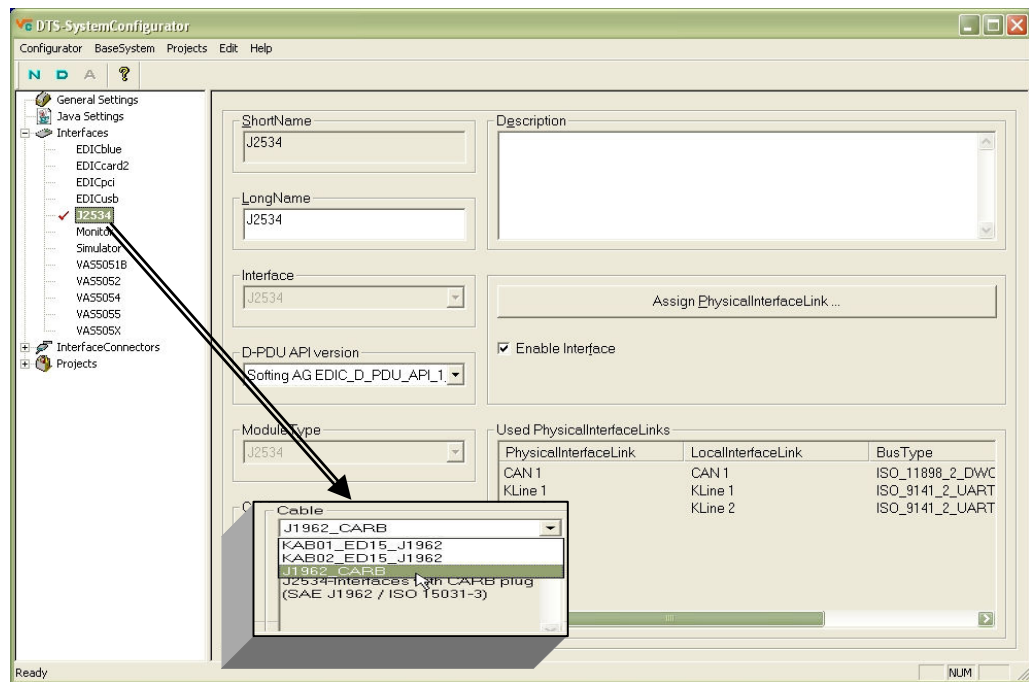


Figure 2 Pass Thru Device Selection Menu

- Step 4. Exit the Configurator and start VAS Adaption functions by launching the SAE Adaptions shortcut. The SAE Adaptions shortcut loads the VAS for PC application as shown below:



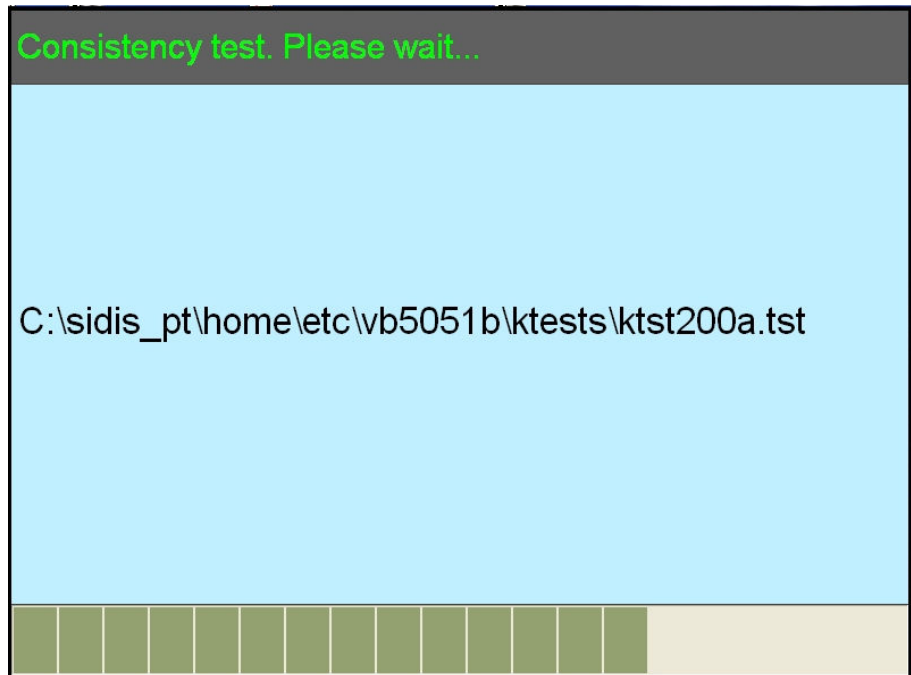


Figure 3 VAS for PC file Consistency Test

Step 5. Once the VAS for PC erWin logon page appears, enter your erWin provided User ID and Password.

The Logon Page should look similar to the following:



Figure 4 VAS for PC erWIN Logon Page

- Step 6. Once the VAS for PC start page appears, click the **Adaption Functions** button on the lower right-hand corner of the screen.

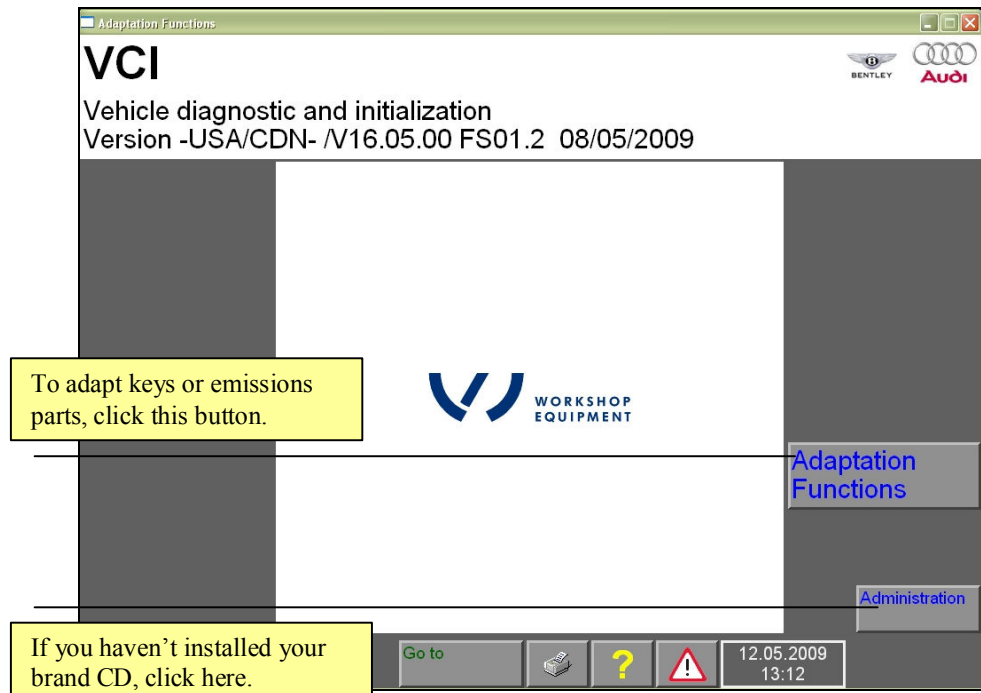


Figure 5 VAS for PC Start Page

Note: You must have previously installed the brand software for your VAS for PC application to adapt emissions modules to the immobilizer system. See Make Installation instructions on the erWIN website for more information.

For Audi, Bentley, and Lamborghini brands, click:

<https://erwin.audiusa.com/erwin/showVasIndex.do#step5Make>

For VW brand, click:

<https://erwin.vw.com/erwin/showVasIndex.do#step5Make>

- Step 7. Click Adaption Functions, and then click down to the Immobilizer function for your vehicle. There will be a several second delay while the VAS for PC application loads the Adaption Functions for your vehicle. When the load is complete, a screen similar to the following displays:

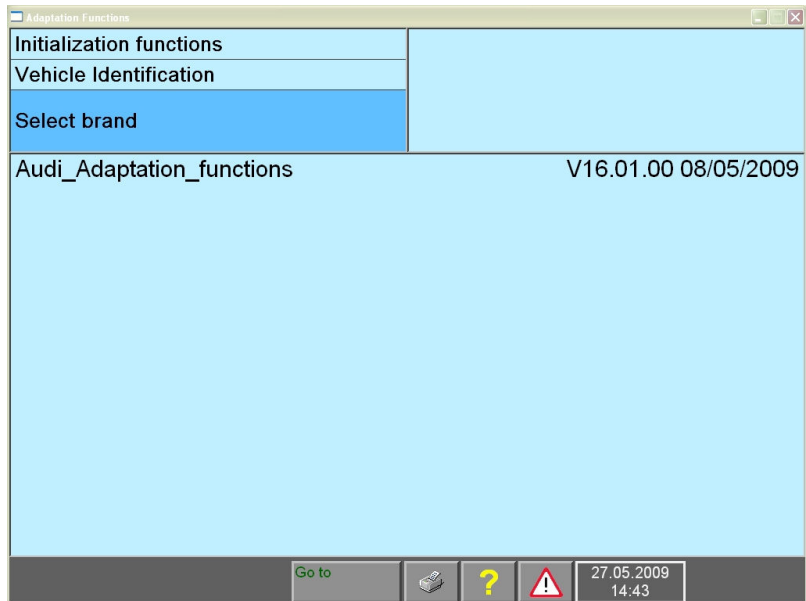


Figure 6 Adaptions Functions Main Menu

Step 8. Click down through the menus until you have the option to select Immobilizer Functions from the list.

The Immobilizer function you select, should follow a path similar to the following:

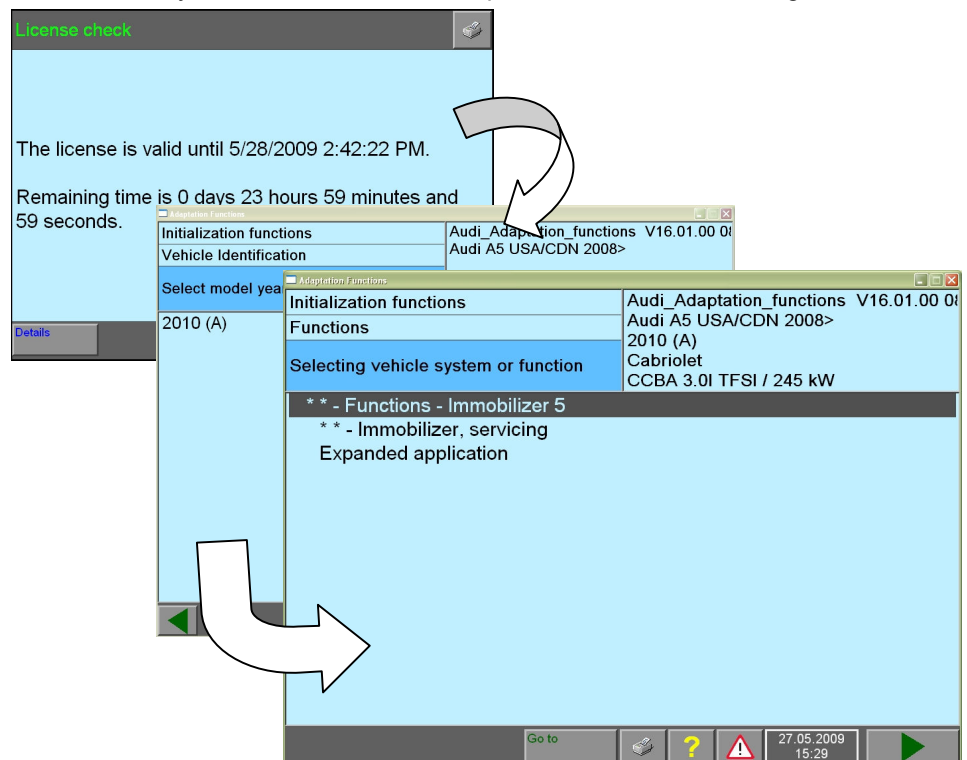


Figure 7 Adapt Module to the Immobilizer system sample path

Once you have selected the correct immobilizer function a Network Security Logon screen will appear:

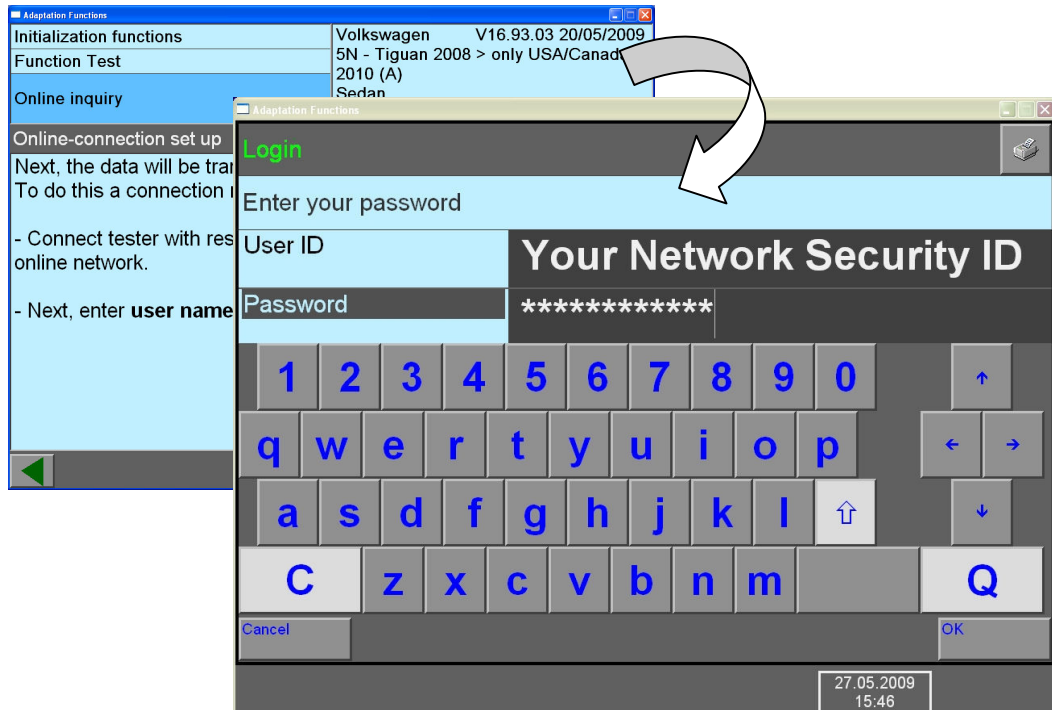


Figure 8 Network Security ID Logon page

- Notes:
- ¹Your Network Security ID and Password were emailed to you during the enrollment process. This is the ID that was built off of your drivers license number and is needed to access the Immobilizer software hosted in Germany.
 - ²The menu path you select depends on what module, model, and MY of vehicle you are working on. For general user information on the VAS for PC software, refer to the Siemens manual posted on the erWIN web site.

- Step 9. Logon to the Immobilizer Network Server using your Network Security ID and Password, and then perform the adaption process.
For general user information on the VAS for PC software, refer to the Siemens manual posted on the erWIN web site.

3 Troubleshooting

- You received an XML Parser error, such as “MSXML support is not installed or is not configured correctly.”

- √ Download and install Microsoft XML Parser 4.0 SP2 or later:
<http://www.microsoft.com/downloads/details.aspx?FamilyID=3144b72b-b4f2-46da-b4b6-c5d7485f2b42&displaylang=en>

Note: You may have to uninstall MSXML 4.0 before you can successfully install SP2.

- You received the VAS software error: “Fault number: 800.65” or “Fault number: 200.45”
 - √ Ensure your Pass Thru device is connected.
 - √ Run through check list (see Section 1.2, “Adaption Check List” on page 1).
- You receive a “No brand CD has been installed, yet.”
- Download and install the brand software (see erWIN help text described in Step 5: Download VAS for PC Brand software from erWIN on page 21)

3.1 FAQs

How high is the volume of data transmitted during immobilizer adaptation?

- √ During update programming approx. 4MB are transmitted via the Internet connection. Local administrator rights are necessary for its installation on your laptop PC.

Why do I need a permanent Internet link for update programming?

- √ In order to avoid errors occurring during the immobilizer process it is important to understand that once started, the process can not be interrupted or disconnected and the PC must not be allowed to go into standby, hibernation or similar power management modes.

3.2 Still Having Trouble?

Logon to erWIN and fill out a support form. A Technical Representative will contact you within 24 hours.

- √ For Audi, Bentley, and Lamborghini brands issues, logon and fill out the support form located at:
<https://erwin.audiusa.com/erwin/showRequestSupport.do>
- √ For VW brand issues, logon and fill out the support form located at:
<https://erwin.vw.com/erwin/showRequestSupport.do>



Appendix A: erWIN Online Download and Licensing Instructions

excerpt from your erWIN web site

Overview – Introduction

The Anti-theft Immobilizer system on Audi, Bentley, Lamborghini and Volkswagen vehicles, prevents the engine from being started by unauthorized means.

Some vehicle electrical system control modules that monitor or control engine emissions, as well as some related modules, are integrated with the Anti-theft Immobilizer system.

Before You can Replace an emission part

Should an emissions related control module that is integrated with the anti-theft immobilizer system require replacement, the new module must be adapted to the anti-theft immobilizer system. Adaptation is required for secure data communication between all vehicle system modules that are integrated with the immobilizer system. Module examples are: Engine Control Module (ECM) and Transmission Control Module (TCM), anti-theft immobilizer control module, instrument cluster (IC), and vehicle keys.

The VAS for PC software enables immobilizer adaptation of applicable control modules on m.y. 2010 and newer, Audi, Bentley, Lamborghini and Volkswagen vehicles. Users are guided through the adaptation process via an interactive graphics and text interface.

Requirements for using the VAS for PC software follow:

- You have enrolled into the program
- You have received an email from VWGoA that contains a Security ID and Password to access the immobilizer application hosted in Germany
- You have received an email from VWGoA that contains a certificate file (e.g. `IndepeDeale.30001.300999.pfx`)
- You have installed the certificate onto your PC
- You have obtained a J 2534-1 Pass Thru device
- You have the JVM 1.4.2_15 installed on your PC
- Your computer environment meets the requirements outlined in Section 1.1, "Minimum System Requirements" on page 1

Recommended J 25434-1 Pass Thru devices

Pass thru devices are available for purchase from a recommended Manufacturer for registered workshops to perform Immobilizer functions. The Pass Thru devices that have been tested to work with VAS for PC follow:

- I+ME Pass-Thru+XS
Available from <http://www.passthruXS.com> or (734) 266-2083
- DrewTech CarDAQ2534
Available from Drew Technologies, Inc.
<http://www.drewtech.com> or (734) 222-5228
- Blue Streak iflash Global Programmer
Available from Blue Streak Electronics
<http://www.bsecorp.com> or (905) 669-4812



- Email at Info@bsecorp.com
- DG-VSI-2534
Available from Dearborn Group Technology
<http://www.dgtech.com> or (248) 488-2080
Email at sales@dgtech.com

Note: Currently, Pass Thru re-programming supports SAE J2534-1 version 4.04 only. Please ensure that you have installed the appropriate driver for your Pass Thru device. For details read the documentation shipped with your device or contact the manufacturer.

VAS for PC Setup

Minimum System Requirements

PC:

CPU	1.7 GHz
RAM	1 GB
Graphics	1024x768
Hard Disk	10 GB Available
USB:	USB connection for Pass Thru-Box
LAN:	100 Mb Broadband

Diagnostic:

J 2543-1 Pass Thru device
Battery Charger connected to vehicle during adaption

Warning! VAS adaption drains car batteries very quickly. If the battery charge depletes before adaption finishes, permanent damage to modules integrated with the immobilizer system could occur.

Software:

Windows XP Professional (Service Pack 2) OR
Windows 2000 (SP 4)

- VAS for PC Base CD or erWIN download (v16.12 or later)
- VAS for PC Brand CD(s) or erWIN download (Audi, Bentley, Lamborghini, and/or VW)

Microsoft Internet Explorer 6.0 SP 2, plus:

- √ Microsoft XML Parser 4.0 SP2
- √ Adobe Acrobat Reader 5.05
- √ Java 2 Runtime Environment 1.4.2_15

VAS for PC System Limitations

The VAS for PC application is designed to adapt modules to the anti-theft immobilizer system on MY 2010 or later vehicles only. The software must be run when replacing emissions related parts such as the ECM, TCM, IC, vehicle keys, and the anti-theft immobilizer control module. This software package includes the following product components:

- VAS for PC Base software (Ver. 16.12 or later)
- VAS for PC Brand software matching the brand(s) you repair: Audi, Bentley, Lamborghini, and/or VW.



Note: Using this product for any purpose other than adapting emissions related parts to the immobilizer system is not recommended or supported.



Step 1: Complete Pass Thru Enrollment Forms

What's needed?

- You must have a broadband internet connection
- You must be a licensed Independent Workshop with a Windows 2000 or XP computer

How?

1. Contact arvato at (800) 544-8021 or email vwgoa@arvatousa.com
2. Resolve will provide you with the following enrollment forms:
 - √ VWGoA Immobilizer Service Application
 - √ VWGoA Network Security ID Request form
3. You must complete and submit the forms along with your business license documentation and a \$100.00 Application Fee.

Notes: Your application will be approved within 5 business days of receiving the application fee. If denied, an explanation and full refund will be provided.

For approved applications, there is an additional 72 hour processing period required to issue your workshop a Network Security ID and Password.

An approved registration is good for 18 months from the time of application.

4. Once approved you will receive 3 emails from VWGoA Information.security@vw.com. The emails will contain the following:
 - √ Your VWGoA Certificate (e.g. IndepeDeale.30001.300999.pfx)
 - √ Your Network Security User ID
 - √ Your Network Security Password (sent in a separate email for security reasons)
5. Install the VWGoA Certificate into your Windows Certificate Store

Step 2: Install VWGoA Certificate

What's needed?

- You must have received a certificate from Information.security@vw.com.
- You must have administrator access to your PC

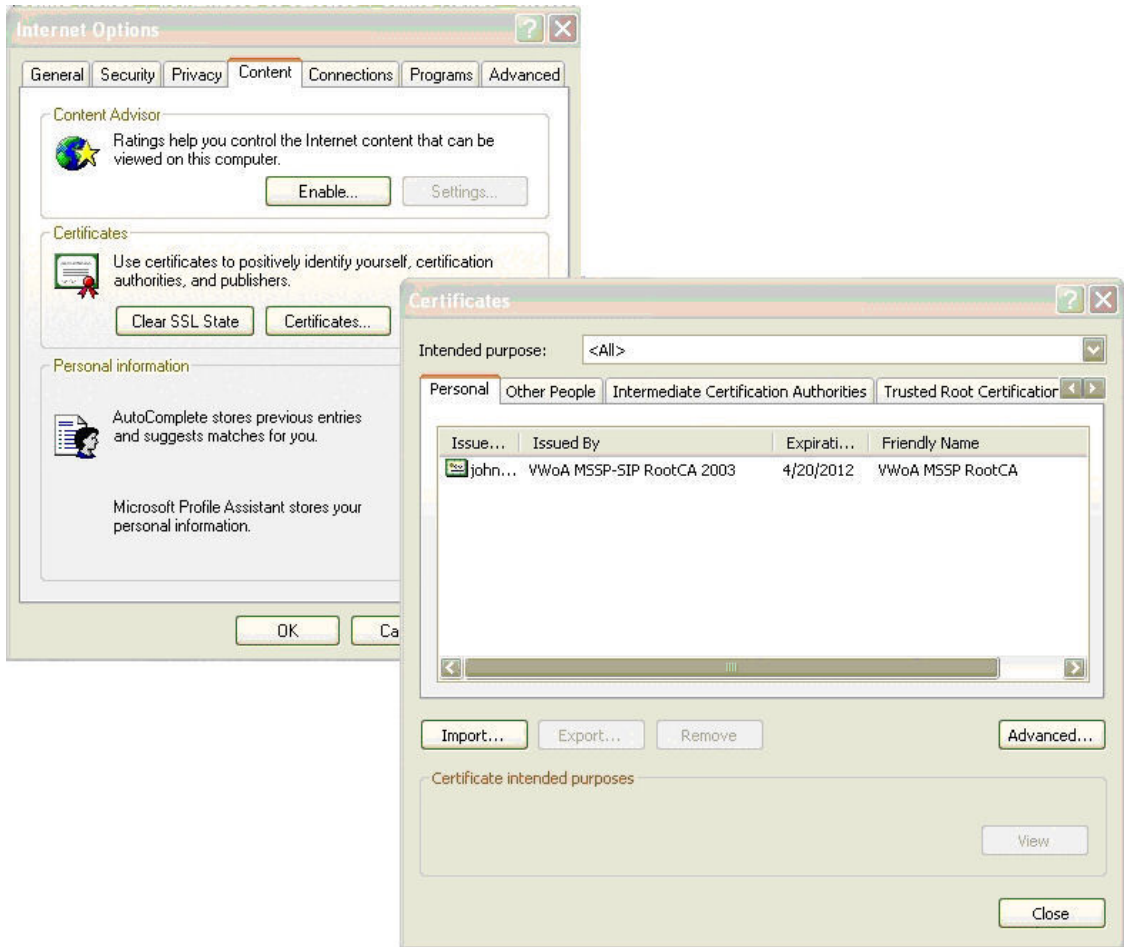
How?

1. Open the email sent to you from Information.security@vw.com that contains the certificate file.
The email attachment you receive will follow a naming convention that looks similar to the following: `IndepeDeale.30000.60599.pfx`.
2. Detach, copy, or move the certificate file from your email program to your Windows Desktop or a folder of your choice.
A shortcut icon will be placed on your Windows Desktop or in the folder you created for this purpose:



VWGoA Windows Certificate Icon

3. Double-click the certificate icon, and then follow the Certificate Import Wizard prompts.
Notes about the Certificate Import Wizard:
 - √ On the "File To" Import screen, click Browse to locate the certificate file on your desktop or in the folder you created.
 - √ On the "Password" screen, leave all the fields blank, and then click Next.
 - √ On the Certificate Store Screen, check the "Automatically select the certificate store based on the type of certificate".
4. Confirm the installation of the certificate by opening your Internet Browser, and selecting Tools --> Internet Options --> Content --> Certificates.
You should see a VWoA certificate similar to the following:



5. Download the VAS for PC software from erWIN

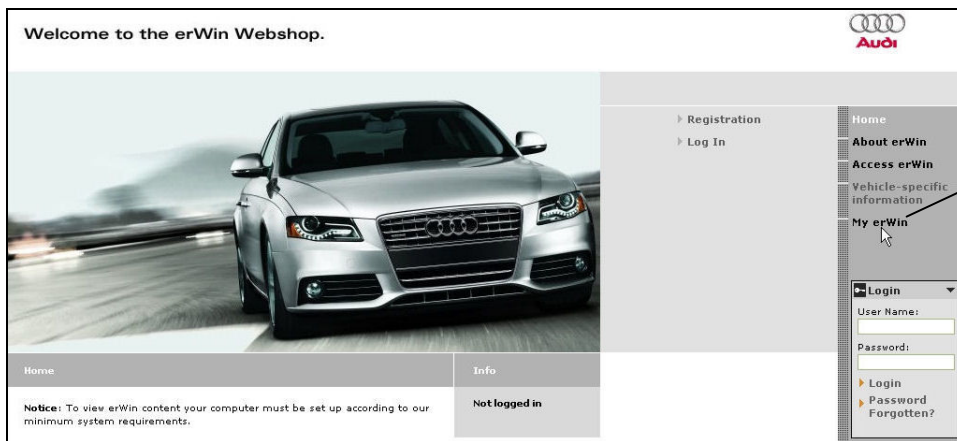
Step 3: Register for erWIN

What's needed?

- You must have a broadband internet connection

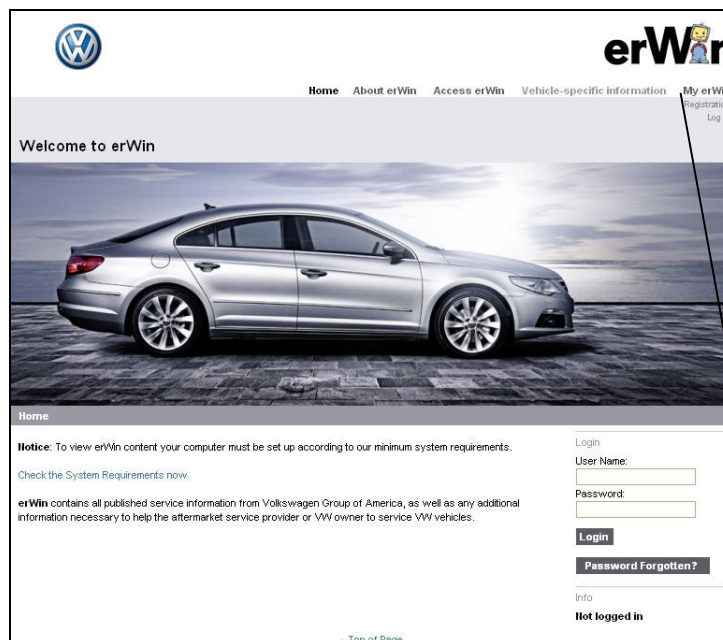
How?

1. Logon to the erWIN site branded for the type of vehicle you repair.
 - ✓ For Audi, Bentley, and/or Lamborghini, your erWIN site is: <https://erwin.audiusa.com/erwin/showHome.do>
 - ✓ For VW brand vehicles, your erWIN site is: <https://erwin.vw.com/erwin/showHome.do>
2. Select My erWIN from the menu, and then click Registration.



For a free Audi account, Register from the

erWIN for Audi, Bentley, and Lamborghini workshops



For a free VW account, Register from the menu bar

erWIN for VW workshops

3. Complete the registration information, and then check the VWGoA terms and agreements stipulated by VWGoA and the erWIN distribution site (i.e. Arvato).



General terms and conditions (GTB) for your erWin subscription

§ 1 Scope of application

Audi of America (hereafter referred to as "Audi") assigns the use of service information in electronic form exclusively under the following conditions. This also applies in the event that the purchaser has contrary

- I accept the GTB of erWin
- I hereby understand that arvato distribution GmbH, on behalf of Volkswagen Group of America, will maintain my registration information and not share it with other Third Parties.

[▲ Top of Page](#)

Global Terms of Business for erWIN and VAS for PC usage

Step 4 Download VAS for PC Base Software from erWIN

What's needed?

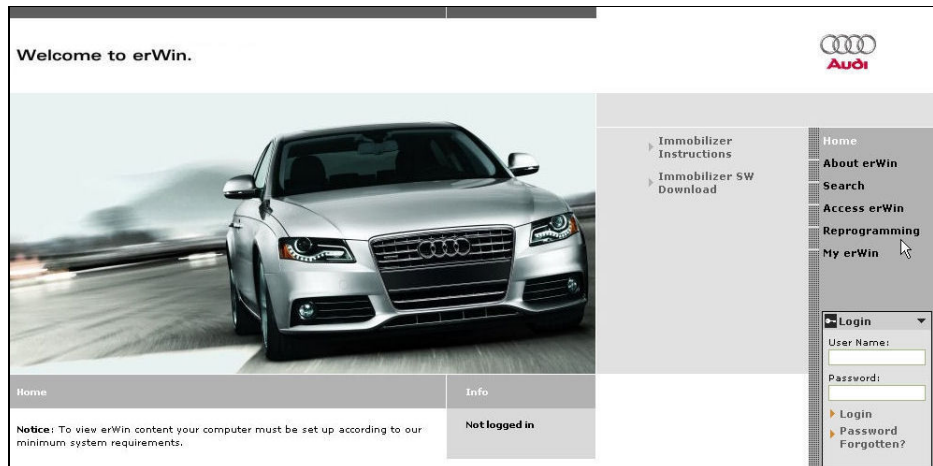
- You must have previously installed the certificate you received from Information.security@vw.com
- You must have administrator access to your PC and uninterrupted broadband access to the Internet

Note: Alternatively, you can order a CD from Resolve by calling 800 544-8021 or requesting a CD by email (vw@resolvecorporation.com).

- You must have previously installed JVM 1.4.2_15 on your PC

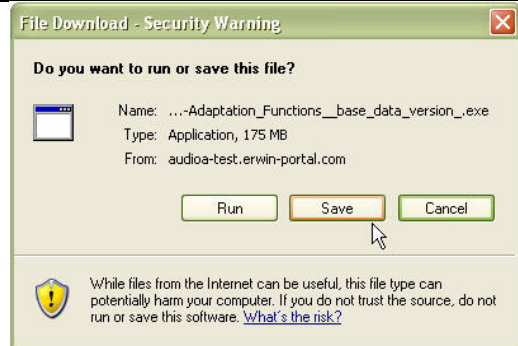
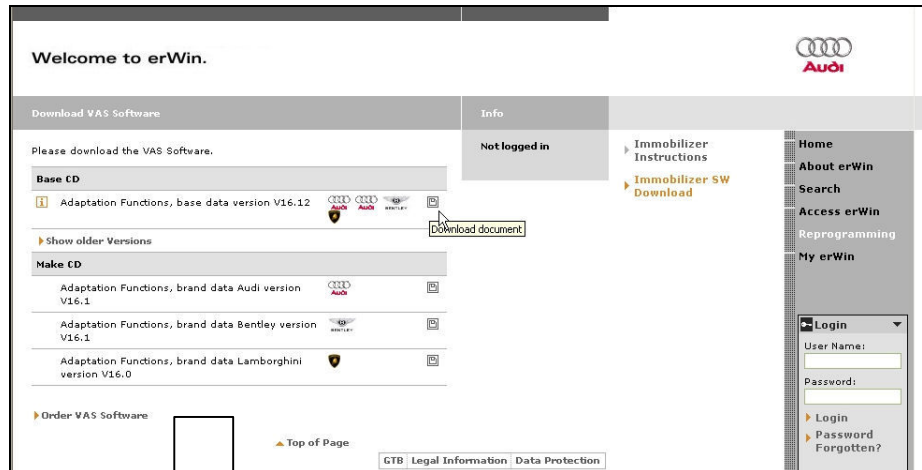
How?

4. Open the erWIN website dedicated to the brand of vehicle your workshop repairs.
 - If you repair VW cars, click <https://erwin.vw.com/erwin/showHome.do/>
 - If you repair Audi, Bentley, and/or Lamborghini cars, click <https://erwin.audiusa.com/erwin/showHome.do/>
5. Click Reprogramming from the menu on the right-side of the page (Audi) or top of the page (VW), and then double-click the "Immobilizer SW Download" option:



VAS for PC Immobilizer SW Link – Audi

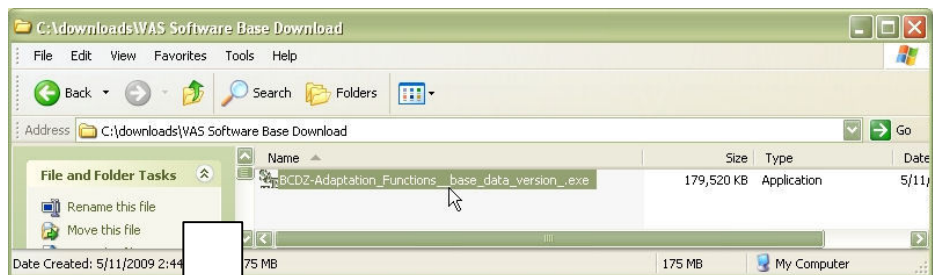
6. Double-click the latest version of VAS for PC software listed under the Base CD heading, and then click Save from the File Download pop-up dialog.

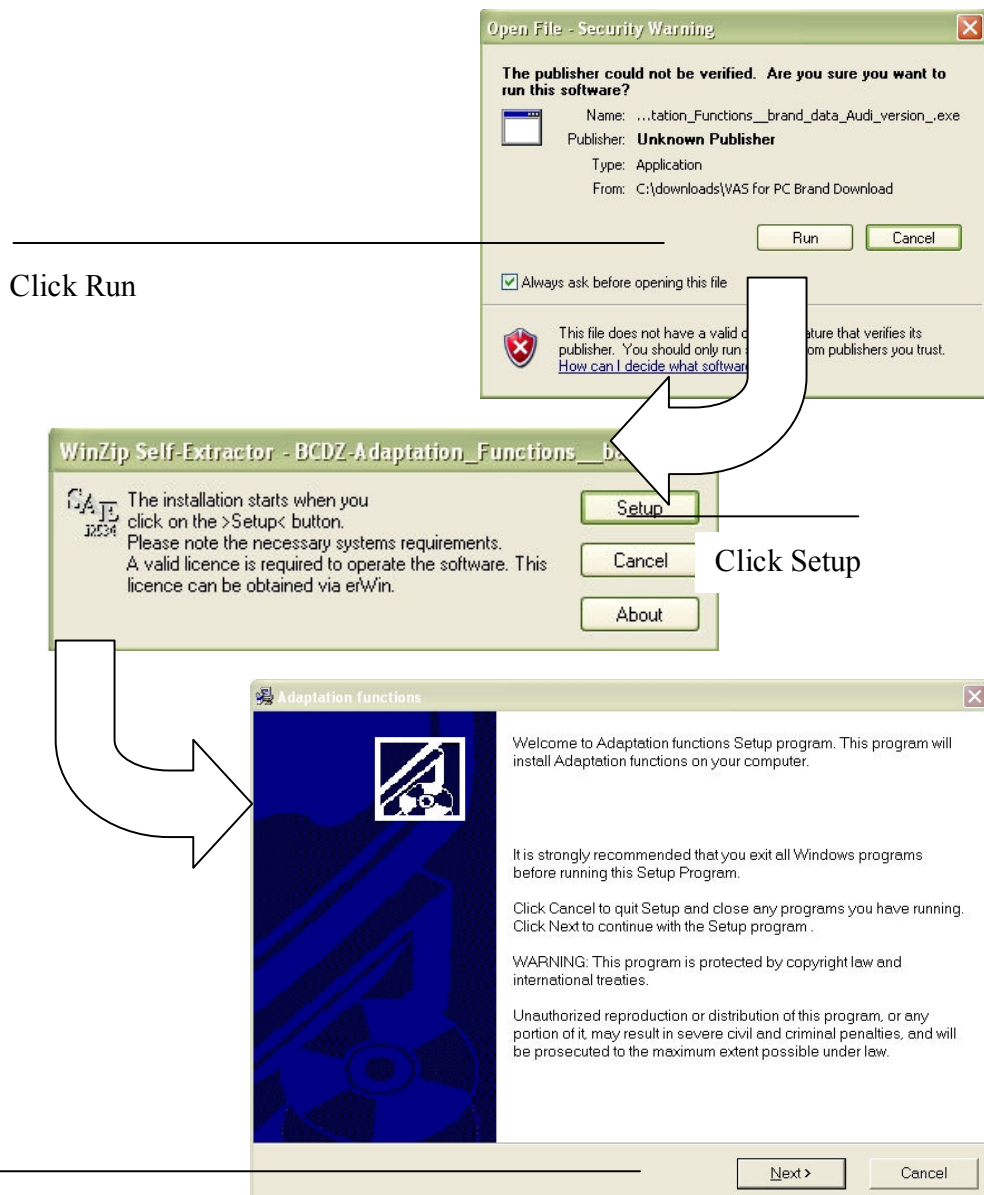



Immobilizer Base Software Download

Notes about Base Software Installation:

- ✓ In the figure above, the latest version is “Adaption Functions, base data version V16.12”. Yours might be different
 - ✓ When browsing for a folder to download the software into, remember where it is located. You’ll need to find it to later to install the VAS for PC software onto your PC.
7. Locate the folder where the software was downloaded, and then double-click the file to start the VAS for PC Base CD installation process.
- The installation process should look similar to the following:





8. Follow prompts PC software, double-click the “Adaption functions” shortcut icon on your desktop .

Notes:

- ✓ There might be as many as 3 items placed on your Windows Desktop and Start Menu. The icon you want is labeled, “Adaption functions,” which will run the VAS for PC software
 - ✓ For information on the other items you see (e.g. VC Configurator and DTS folder), refer to the VAS for PC manual on the erWIN web site.
9. Return to erWIN website and download the brand software modules that correspond to the types of cars you repair.

Step 5: Download VAS for PC Brand software from erWIN

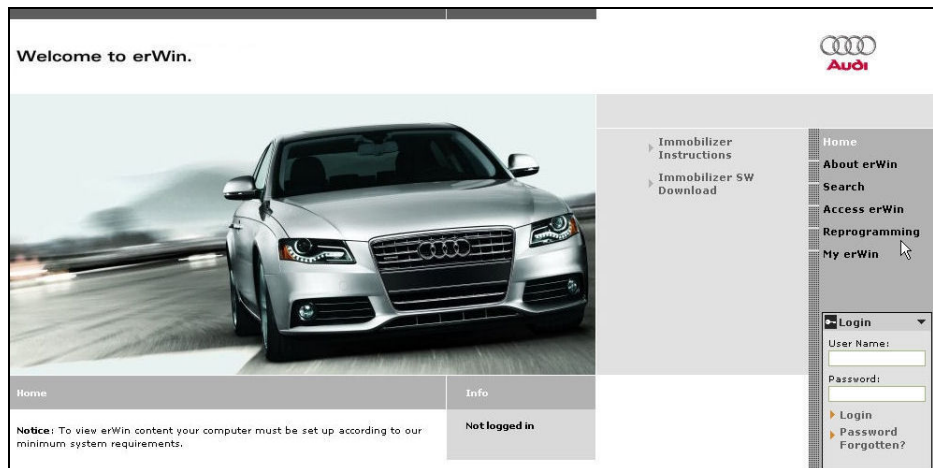


What's needed?

- You must be a registered erWIN user
- You must have previously installed the certificate you received from Information.security@vw.com
- You must have downloaded and successfully installed the VAS for PC base software

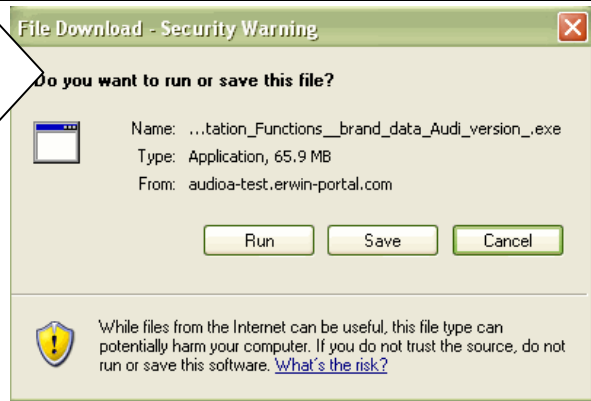
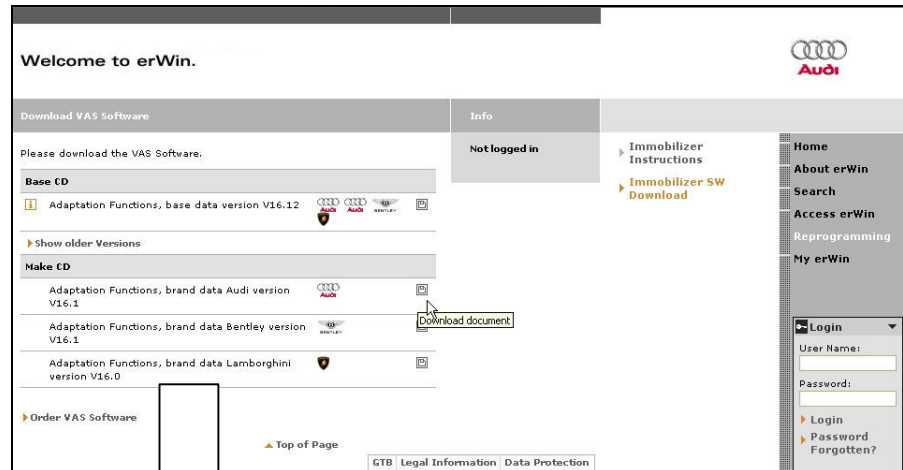
How?

1. To install the Brand CD, open the erWIN website dedicated to the brand of vehicle your workshop repairs.
 - If you repair VW cars, click <https://erwin.vw.com/erwin/showHome.do/>
 - If you repair Audi, Bentley, or Lamborghini cars, click <https://erwin.audiusa.com/erwin/showHome.do/>
2. Click Reprogramming from the menu on the right-side of the page (Audi) or top of the page (VW), and then double-click the "Immobilizer SW Download" option:



VAS for PC Immobilizer SW Link

3. Double-click "Immobilizer SW Download," and then click the box next to the appropriate logo beneath the Make CD heading.
Click Save when the pop-up dialog appears:



Immobilizer Brand Software Download

Notes about Brand Software Installation:


- ✓ When browsing for a folder to download to, remember where it is located. You'll need to find it later to install the VAS for PC software onto your PC.
4. Browse for the folder you want to put the brand software, and then click Unzip.



WinZIP Self-Extractor

Notes about Brand Software Unzipping:

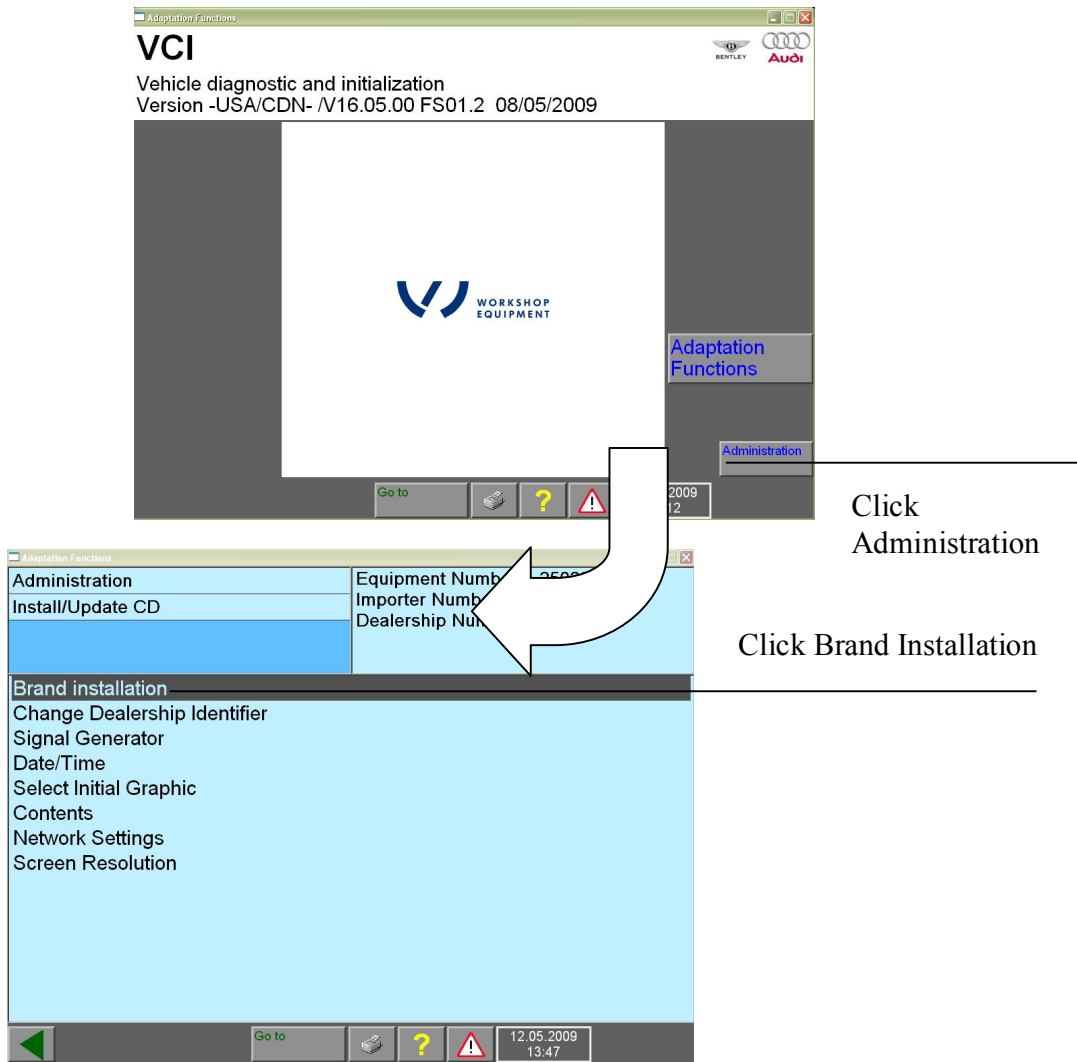
- ✓ Many files will be added to the folder you choose. Remember this folder because you'll need it later when you add brand adaption functions to your VAS for PC software.

5. Logon to your VAS for PC software by double-clicking the shortcut labeled, “Adaption functions” , and then entering your erWIN User ID and Password:



Enter your ID and Password,
and then click OK.

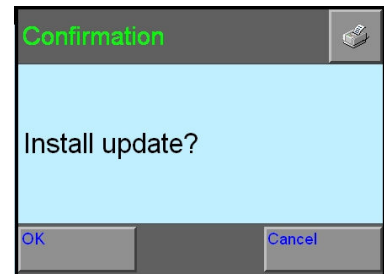
6. From the VAS for PC start page, click the “Administration” button, and then select Brand Installation to add brand adaptation functions to your software.



7. Locate the folder where you downloaded the brand software, and then select the file named, "label".



Click OK and follow prompts



8. If you're ready for immobilizer adaption, purchase a license from the erWIN web site.

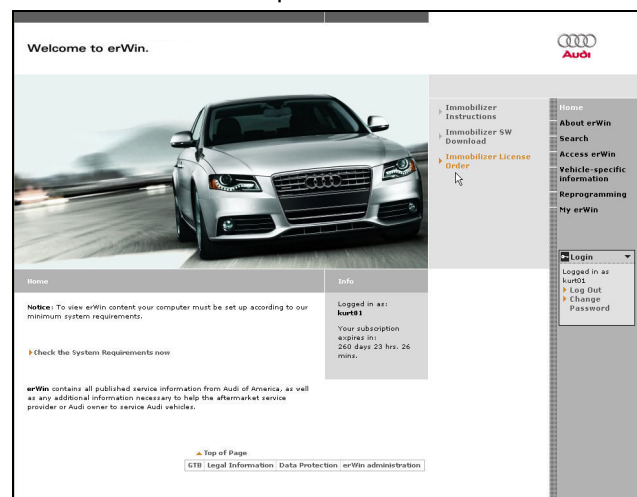
Step 6: Purchasing a 24 Hour Immobilizer License

What's needed?

- You must be a registered erWIN user
- You must have previously installed the certificate you received from Information.security@vw.com
- You must have received an email from Information.security@vw.com containing a Network Security ID and Password
- You must have downloaded and successfully installed the VAS for PC base software
- You must have downloaded and successfully installed the VAS for PC brand software

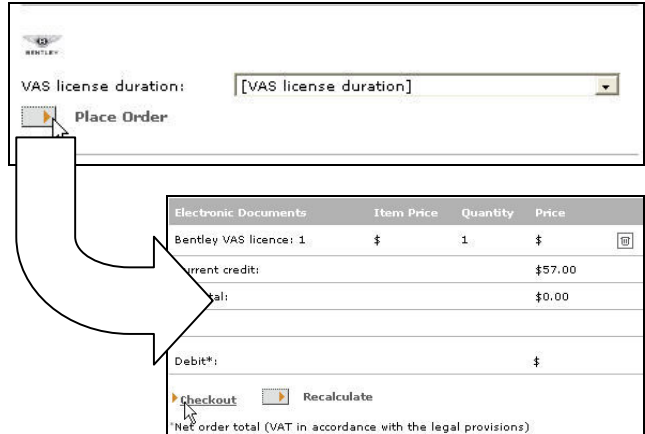
How?

1. Logon to the erWIN website dedicated to the brand of vehicle your workshop repairs.
 - If you repair VW cars, click <https://erwin.vw.com/erwin/showHome.do/>
 - If you repair I Audi, Bentley, or Lamborghini cars, click <https://erwin.audiusa.com/erwin/showHome.do/>
2. Click Reprogramming from the menu on the right-side of the page (Audi) or top of the page (VW), and then double-click the “Immobilizer License Order” option:



24 Hour erWIN license

3. Select the duration of the VAS for PC license you want to purchase from the drop-down menu provided.
At this time, the only duration available is 24 hours.



4. If you have a MY 2010 vehicle ready for immobilizer adaption, click Checkout and Submit order.

Step 7: Perform Immobilizer Adaption

What's needed?

- You must be a registered erWIN user
- You must have previously installed the certificate you received from Information.security@vw.com
- You must have received an email from Information.security@vw.com containing a Network Security ID and Password
- You must have downloaded and successfully installed the VAS for PC base software
- You must have downloaded and successfully installed the VAS for PC brand software
- You must have a MY 2010 or later vehicle repaired and attached to the VAS for PC computer you are using to adapt

How?

1. Follow the adaption instructions described in the VAS for PC Quick Reference document (see Section 1, "VAS for PC Overview" on page 1.)

Note: If you need more information on how the VAS for PC software functions than what is covered in the Quick Reference document, refer to the VWGoA VAS for PC Manual on the erWIN web site.
